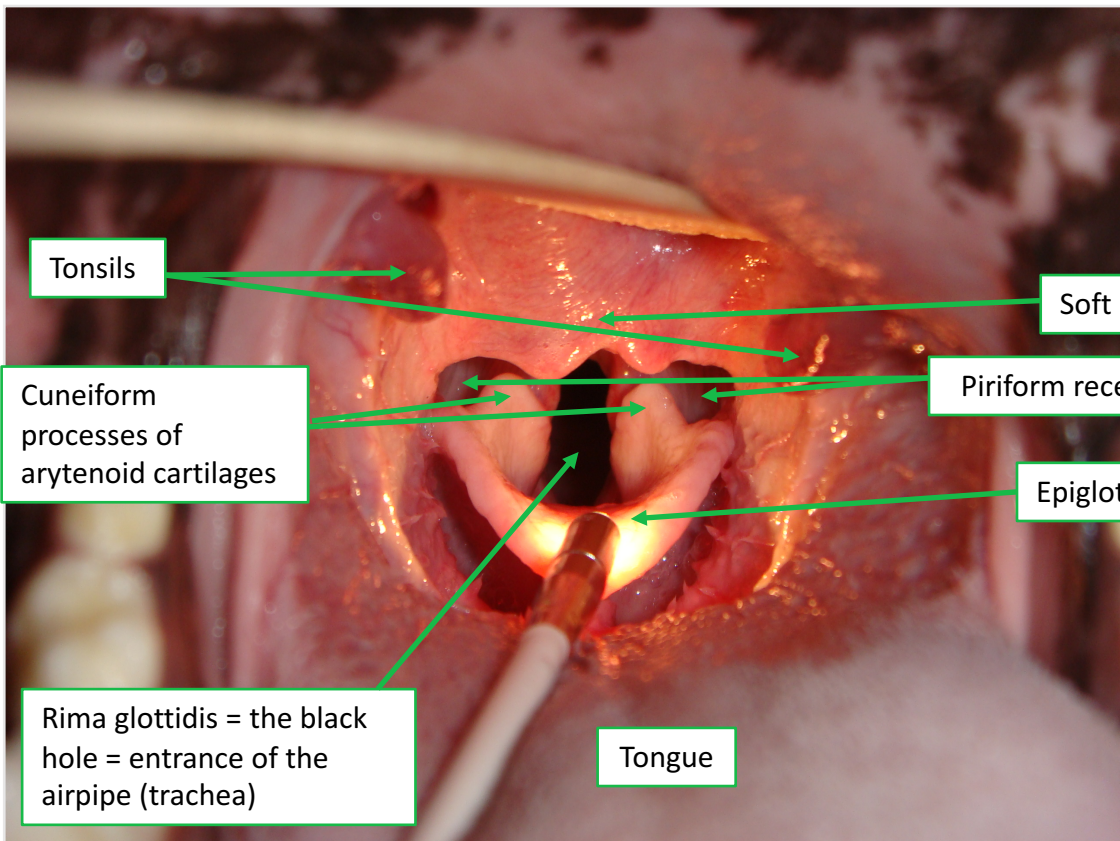
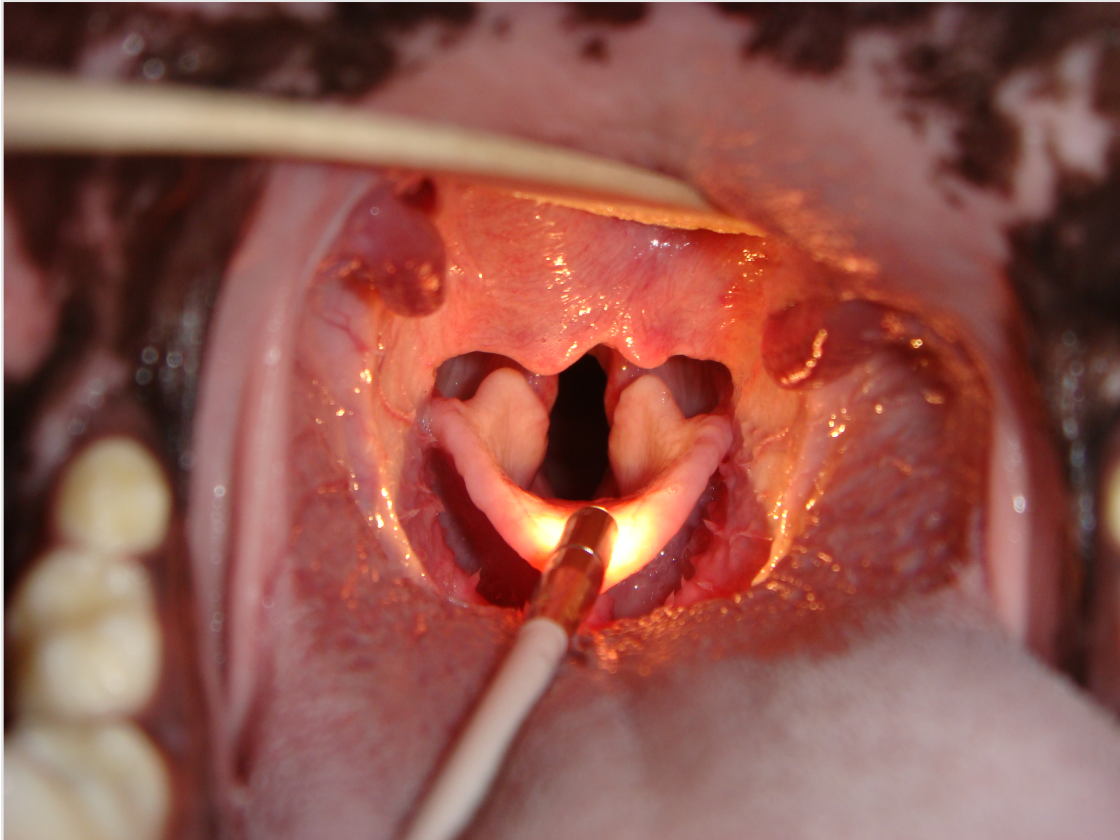
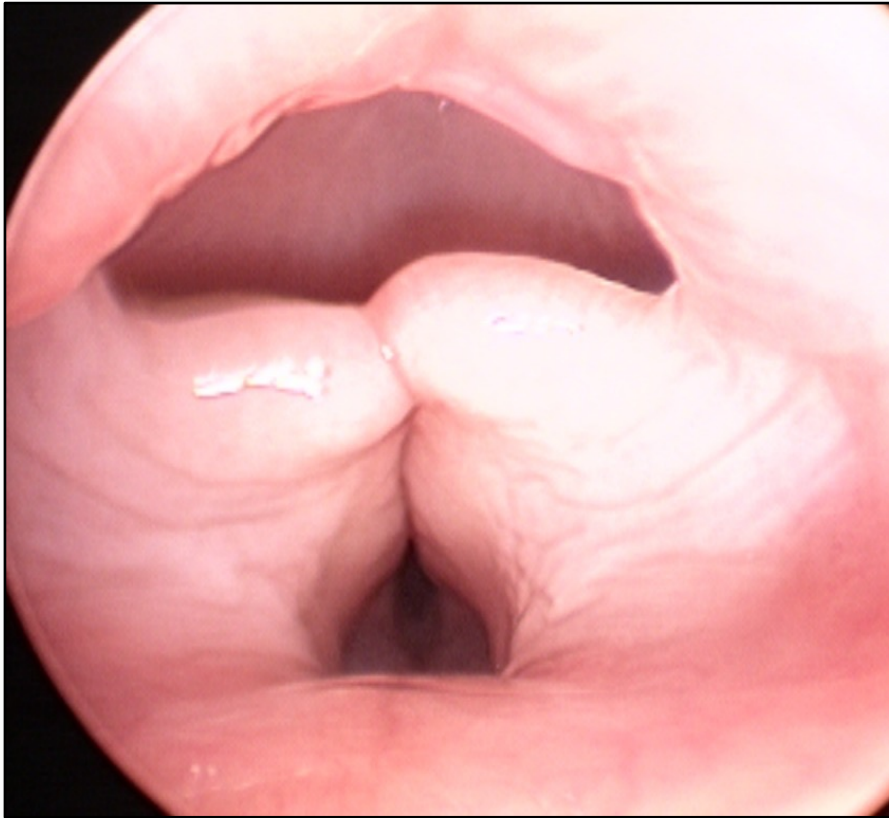


Normal Larynx

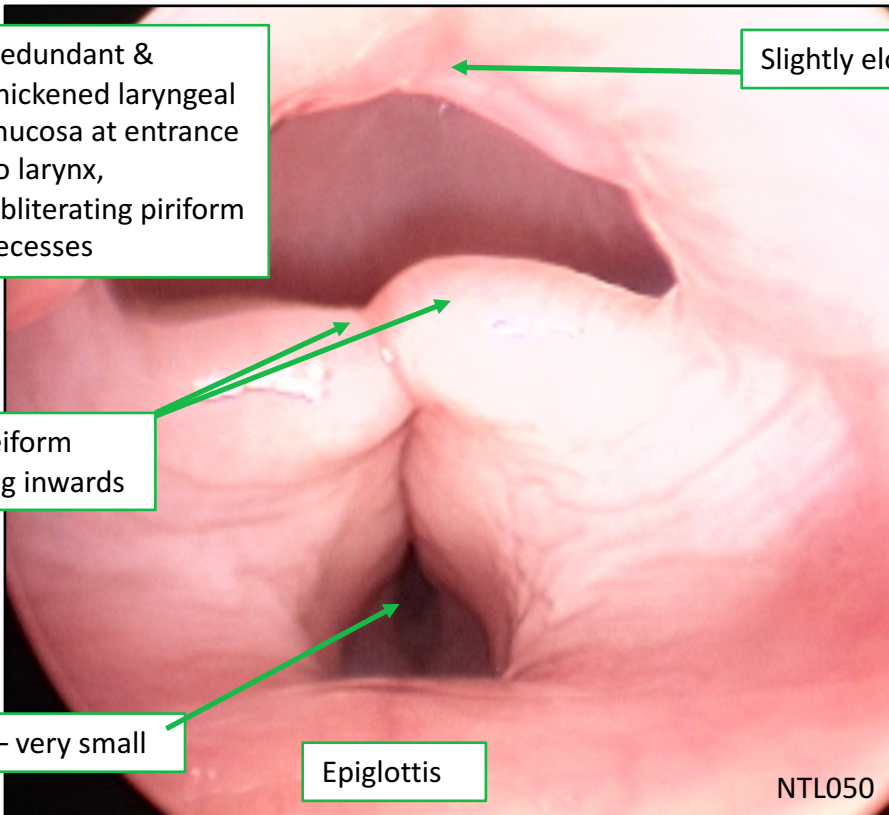


NTUAS Larynx



Redundant & thickened laryngeal mucosa at entrance to larynx, obliterating piriform recesses

Slightly elongated soft palate



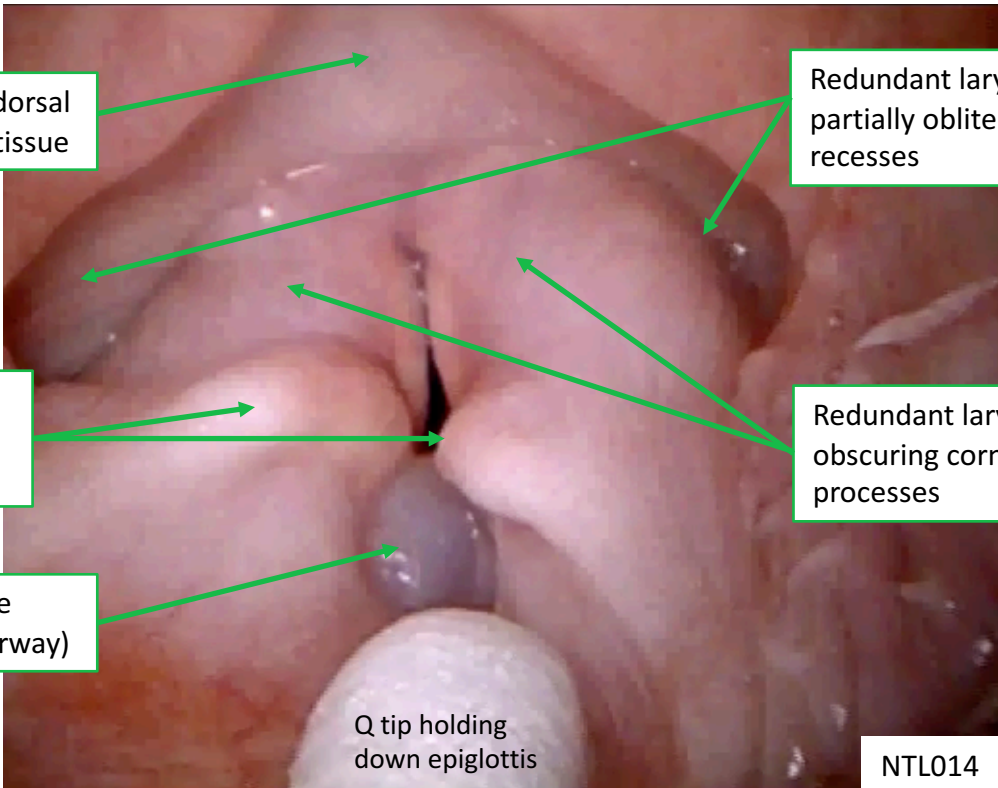
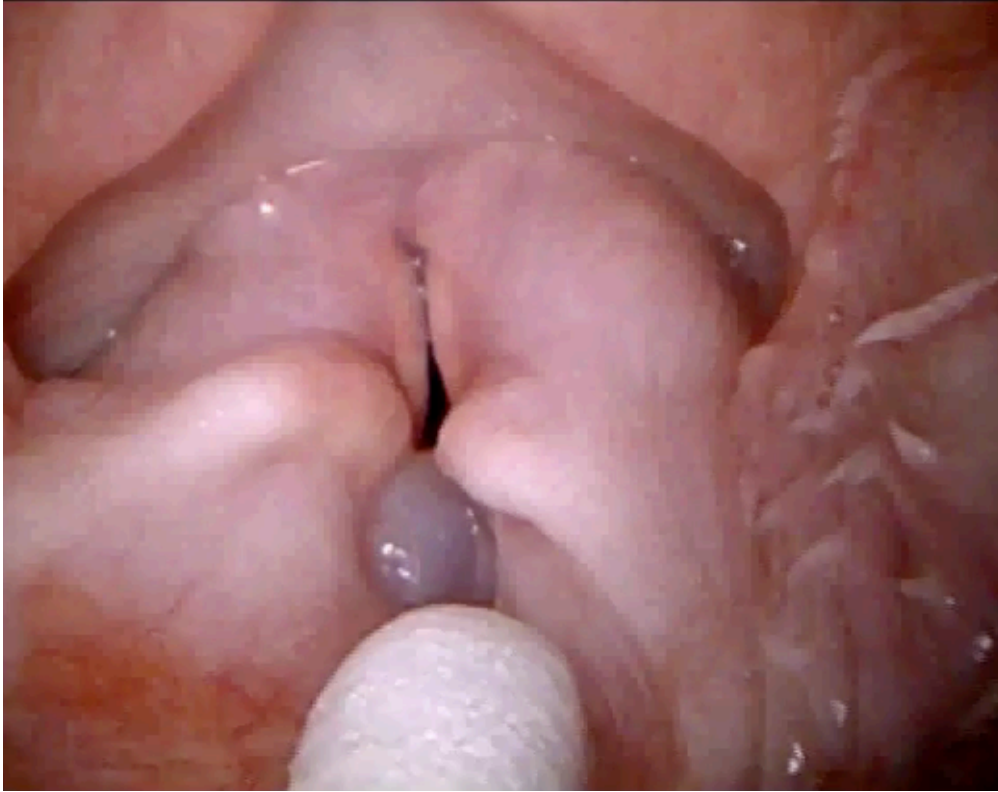
Thickened, cuneiform processes folding inwards

Rima glottidis – very small

Epiglottis

NTL050

NTUAS Larynx



Redundant dorsal pharyngeal tissue

Redundant laryngeal mucosa partially obliterating piriform recesses

Cuneiform processes folding inward

Redundant laryngeal mucosa obscuring corniculate processes

Everted saccule (obstructing airway)

Q tip holding down epiglottis

NTUAS Larynx



Keyhole shape to the larynx, immediately behind the vocal folds. The vocal folds are immediately behind the ventricles (saccules), which in many Norwich terriers, are everted.