



# the Norwich Terrier News



THE NORWICH TERRIER CLUB U.S.A.

CHRISTMAS

18

1969

## PARADOX OF THE STUD DOG

The intent of this guest writer is to suggest that the stud dog, as such, should find his employment somewhat more gainful than it is. My own breed, while not the Norwich Terrier, is similar in that it enjoyed a fairly widespread lack of popularity until recently, and now finds its registrations rising. Unfortunately, we cannot embark upon a discussion of the relative importance of sire vs. dam. I am confined here to calling some attention to the lack of logic displayed in traditional stud-fee arrangements, prevalent within many breeds and until a very few years ago, within my own.

An advertisement is apt to say: "Litter sired by Ch. XXX." Or: "Top producing sire Ch. XXX, offered at stud to approved bitches." The breeder is more apt to point with pride to the sire than to the dam, and the prospective buyer is usually more interested in the identity of pa. And yet this indispensable figure represents the smallest outlay to the breeder in his list of expenses incurred!

The price of pure bred puppies has doubled, generally speaking, in the last decade, but stud fees have remained unchanged—unless a puppy is the fee. It seems eminently fair that the stud fee should be the equivalent of the selling price of a (promising) puppy. There are many possible extenuating situations, of course, such as a one-puppy litter, etc. Pre-arrangements between the two owners should assure a mutual feeling of fair treatment.

Another benefit of higher stud fees is the discouragement of helter-skelter breeding of dogs by people who should not breed dogs at all. At this juncture in our Affluent Society, the canine population explosion is not far behind the human, and the effects upon our carefully nurtured breeds are being keenly felt. Stud dog management is the first line of defense for any breed. The responsible owner should refuse service to any bitch too young or too old or too frequently bred as well as for the obvious ones of incompatible bloodlines and unreliability of owner of the dam.

Perhaps the explanation of the paradox of the stud dog's vast importance and yet his frugal income is that deep down we think as that plump lady in the Helen Hokinson cartoon, Pekingese clutched to ample bosom, every flower in her hat a—quiver, saying to a man with another Pekingese, "You mean *Daisy* pays *him*?"

Rosalie Graham

## TABLE OF CONTENTS

PARADOX OF THE STUD DOG .....	page 1	OUTSIDE THE USA .....	page 15
KENNEL REPORTS .....	page 2	NOTES ON THE HORN .....	page 16
BREEDING BETTER NORWICH .....	page 7	OBEDIENCE .....	page 17
RAISE AND TRAIN .....	page 9	NORWICH NOISES .....	page 18
VETERINARY AND GENERAL .....	page 11	CLUB ANNOUNCEMENTS AND REPORTS .....	page 21
ENGLAND WILL NEVER BE THE SAME AGAIN .....	page 13	AROUND THE RING .....	page 24
		KENNEL AND AT STUD LISTINGS .....	page 39

## KENNEL REPORTS

**BARBERRY P.E.**—The puppy pictures are of a litter of my two imports Interfields Hamlet and Quartzhill Oxeys Daisy. I am doing some inbreeding to stabilize and fix the type of the stock I now own. My contribution to the fancy will be in the form of affecting more stability in the type we produce.—Ralph I. Hilton, North Hollywood, California

**BETHWAY D.E.**—Our latest champion, Bethways Ringo, won the Puppy Sweepstakes and Reserve Winners Dog at the Club Specialty in June. He won a Group 3rd at Albany in October the same day his 7 month old kennel mate won major points in bitches.

Congratulations to Mrs. Jones who won a 1st and 2nd with her homebred puppies by Bethways Tom Thumb at the Club Match. Bethways Miss Chops also had a nice class win at the Match, and a young brace of daughters by Ch. Bethways Aramis were named best pair at both the Match and Montgomery County.—Mrs. Donald Fournier, Bethany, Connecticut

**BADGEWOOD D.E. and P.E.**—While the kennel is being readied for the whippets and 'The Homestead' is refurbished, Mr. and Mrs. Philip S.P. Fell and their Little People have returned to Peace Dale, R.I., after residing in Kent, England, for a decade.

Norwich were added to Badgewood shortly after the Fells moved to 'Seven Oaks' and both ear types are liked. Jericho Thruppence of Badgewood P.E. has sired a new English champion, Jericho Tuppenny. He can hardly wait to be introduced to American girls. The same goes for Badgewood Clyde D.E. who has left his sister Bonnie behind in England for a few show ring turns. She already has 2 C.C.'s and reserves. Once the Fells are unpacked, their notable prefix will again be seen in the Terrier Ring.

**CASTLE POINT D.E.**—The Castle Point brood bitch pack in 1969 has produced twelve puppies in five matings. Four—two males and two females—whelped October 2, 1969, by Ch. Nanfan Hoppocket ex Castle Point Tempest are now available. Four other bitches have been bred and are in whelp.

On calling the owner of Castle Point Halter, known as Muffins, I was told she has learned to wear ear muffs in winter. I have begged for her picture wearing them and have been promised one. —Mrs. Stevens Baird, Bernardsville, New Jersey

**CHIDLEY P.E.**—Childley Tiger Lily's ring debut at the Club Match was a super success. Thanks and credit go to Mrs. E. H. Hardy who sent me her dam when four months of age, and a year later her sire, Quartzhill College Corin. He was acquired upon the recommendation of Sylvia Warren who recognized extra potential in a pair of six months old puppies while visiting her English friend at Quarry Close. 'Bramble's' famous champion sister now resides at River Bend.

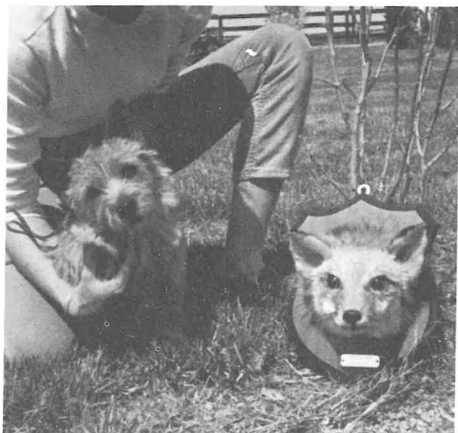
Congratulations to Nancy Lee Wenland's homebred Childley Storm Warning and Mrs. Baldwin's Chigger Buff who won ribbons in their classes and helped their sire win the Match Stud Dog Class, the first black and tan to have achieved this honor.—Mrs. Curtis S. Read, Oyster Bay, L.I., New York

**DUNKIRK P.E.**—Our homebred King's Prevention Tawny Wheat will resume her show career after her motherly duties. She has two majors.

King's Prevention Upland Jock and Dunkirk's Litterbug have had a beautiful litter of three, all of which have found lovely homes. We hope to have two litters by December.

All the Norwich at Dunkirk are working terriers. They go out with the horses every day. Thanks to our Norwich we have few problems with mice and rats.—Mrs. Albert Hurline, Hampstead, Maryland

**GRANGE P.E.**—Grange Pinafore (Quartzhill Bartonian x Hig Tor's Grange Gambit) acquired her first major points at Talbot K.C., Maryland, August 16, 1969, and was second in the class of seventeen Adult Bitches at the Club Match.



Illustrating the Standard GRANGE PINAFORE  
and a fox mask



Mrs. MacIlwaine's TANTRUM



Mrs. Winston's NANFAN  
TILLY TALLY



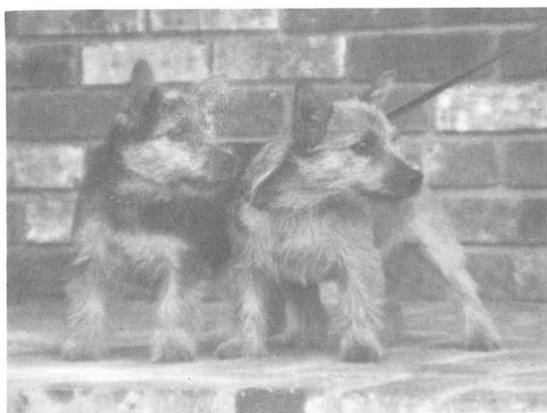
Louise Davidson's CHIDLEY STORM WARNING with  
friends WAB, the rabbit and Egyptian cat



CH. KING'S PREVENTION  
TAMMY BEAR



CASTLE POINT ECARTE and Son  
THUNDERHAWK TOPPER TUCK



Ralph Hilton's BARBARY  
GOLD DIGGER and  
DIAMOND LIL



KING'S PREVENTION MR. MAXWELL



TWO OF PENSUM'S FOLLY  
litter



ICKWORTH MOONLIGHT and  
WENDOVER RUFUS



WENDOVER ELIZA and her sons  
WENDOVER HALF POUND and  
WENDOVER RUFUS

High Tor's Grange Gambit whelped a litter of two males and one female by Ch. Swanee's Gingerbread Man in April. One male, Grange Currant Bun, won the 3-6 months P.E. Puppy Class at the Match. The other male, Grange Plum Pudding, is available as of October 6, 1969.

'Bloodthirsty Department': The Group, 8 to 9 strong, has exhibited 'true terrier instinct' on our daily woods walks by dispatching one possum, five woodchuck, two rats, one blacksnake and a chipmunk over the past nine months. Although hunting is not our prime objective, I feel it is as much a part of a terrier's development as daily exercise to build lean healthy bodies. We are fortunate to have at Strawberry Hill such a wealth of wild and unspoiled territory to explore.—Mrs. Sydney W. Glass, Warwick Maryland

**KING'S PREVENTION P.E.**—A unique day for King's Prevention was the '69 Specialty Show. Our four young bitches Whimsey, Tawny, Fun and Sunshine, ably supported by their sire and grandsire swept the board. Not to be outdone our Ch. MacMillan went BOB at the Chicago International and this fall Rain Maker was BOB at the Devon and Montgomery classics. His young daughter Serena at 3 months was Best Puppy Bitch at the Montgomery All Terrier Breeds Match. Flying the K.P. banner at the shows are Dr. Thomas Carrier and 'Mr. Maxwell', son of MacMillan. (Max has twice placed in Groups in Minnesota); Joe and Donna Cahill and Gay in New York; Marcia Kirshner and Tallula. Ch. Tiger Bear was at Montgomery with Muriel Griffin and Twiggy Bear with her young owner, Nancy Welbourn. New champion is Ch. King's Prevention Tammy Bear by Ch. King's Prevention Hardy Bear ex Ch. Upland Spring Magpie, owned by Mr. and Mrs. Edward Harrington, Madison, Wisconsin.

Five litters have been sired at King's Prevention by Eng. Am. Ch. Ragus Rain Maker by K.P. bitches Gay Britina, Bourbon Tor, Miss Bunty and Beaver Bear, and Col. Larrabee's Childley Small Craft. Bourbon, Bunty and Beaver whelped the first week in October. King's Prevention Tawny Wheat whelped her first litter, 2 males and 1 female by Bill Sykes on 8 October. Young puppies, both sexes, are available.

The Happy Hunting Ground—Ch. Briton of King's Prevention, at twelve years of age, and his constant companion Happy Folly were put to sleep swiftly and painlessly and are buried on the farm. The first champion from this kennel, he was whelped in 1957 by Quartzhill Quince ex Crisp of Redcott. Among his descendants are K.P. champions Hardy Bear, Tiger and Tammy Bear, Barnaby and MacMillan.—Mrs. Sterling Larrabee, Chestertown, Maryland

**KNOLLWOOD D.E.**—Bethways Delilah, born June 22, 1969, has joined the Cohan family. She is a daughter of Ch. Bethways Aramis and Bethways Baby Cricket. We are just delighted with her.—Mrs. A. B. Cohan, Jr., Wayland, Massachusetts

**MT. PAUL D.E.**—Mt. Paul Nanfan and Nanfan Terrapin swapped one and two points back and forth this summer—no smashing victories but we held our own I think the Anglo-American alliance of Foxhunter's Tallyho (Best D.E. Puppy In Match '65) and Ch. Nanfan Heckle has been a success: Nanfan Tallow C.C. at Crufts '69 and his second C.C. lately; Nanfan Terrapin Best D.E. Puppy In Match '68 and Best Adult in '69—Terry has been shown very little but has collected 8 points this summer; now Nanfan Tilly Tally who arrived here at 2 months in October. She is lovely and Joy Taylor is very pleased with a dog puppy she is keeping, Nanfan Thistle, so we'll hope to hear of this new litter in 1970. As Joy says, "It's all very Churchillian."—Mrs. John Winston Gladstone, New Jersey

**NOD HILL P.E.** When BOYO has a fence to get under,  
and FOXY has a tree to climb,

Then Krissie begins to wonder  
why KATHIE goes home on time

—Mrs. Philip Hewes, Avon, Connecticut

**PEMBERTON P.E.**—Pemberton Kennels is happy to announce the arrival of two litters of puppies.

1. A fine, big litter of four bitches by our Bill Sykes and Pemberton Mopsy; by our good champion, Pemberton Trot-On. The litter was whelped on June 28, 1969.

2. This litter contained three bitches, by our proven producer of champions, Jericho Poacher and out of another Trot-On daughter, Pemberton Cottontail. These were whelped on July 4, 1969.

Some of these puppies will be for sale later on.

—Mr. and Mrs. Dean Bedford, Fallston, Maryland

**RIVER BEND D.E. and P.E.**—Quartzhill College Clothilde completed her championship March 22, 1969. Outstanding wins this year were by River Bend Simon, B.O.S. at the N.T.C. Specialty in June and Quartzhill Trillium, B.O.B. at North Shore K.C. Trillium was also proud dam, with one bitch puppy by Simon, River Bend Trilby.

Happy Hunting Ground—'Tuppy' has gone but shall long be remembered for she possessed in abundance the qualities of character dog breeders strive to achieve. She devoted her life to Madame Lobkowicz and as her happy companion maintained an aloofness to the terrier chores of the River bend pack. Her manners were always impeccable. She welcomed guests of all ages and species but her certain dignity raised her above the champions of ring and field. When introduced, When this little Cinderella always brought smiles and the query, "What is she?" Her owner's reply, "A hairy bear", was only partly true. Robincott Tuppence underneath was all heart and a personage. It was a privilege to know this beguiling creature whose purposeful aims were concealed by downy curls—for unlike many of her breed she showed no traits of jealousy. Our sympathy and regrets go to her desolate owner.—Miss Sylvia Warren, Dover, Massachusetts

**SHAWNEE P.E.**—We had two litters in March of this year, two males by Ch. Swanee's Gingerbread Man ex Whinlatter Hesta—one kept and the other to a farm in Downingtown; three females one male by Ch. Shawnee's Cricket ex Ch. Nod Hill's Biscuit—a bitch kept, a bitch to Mrs. W. P. Wear, Cecilton, Md., a bitch to Mrs. H. Ingham, Des Moines, Iowa, and the dog to Mr. R. W. Snowden, Pittsburgh, Pa.—Mrs. S. Powell Griffiths, Philadelphia, Pennsylvania

**WENDOVER D.E.**—Wendover Nora had a litter of two males and two females by Wendover Half Pound. Three of Nora's puppies are going to new Norwich Terrier enthusiasts. Their sister will probably stay at Wendover Farm.

Ickworth Moonlight ('Folly' at home) was just over eight weeks old when she crossed the ocean with us last March. By Miss Hazeldine's Ch. Ickworth Ready out of Ickworth Bluemarking Katriona, she is developing well and is about to complete a sub-novice class in obedience.

In Memoriam—Wendover Apple, November 14, 1957—October 22, 1969. Wendover Apple was our first daughter of Mt. Paul Bridget and Ch. Partree Cobbler. Bred to import Gotoground Foxhunter she whelped fifteen puppies in three litters and weaned fourteen of them, including three which were shown to championships. Her happy hunting ground must include many garter snakes and even more squirrels.—Mrs. Stanford Mallory, Mendham, New Jersey

**LONGWAYS P.E.**—Just finished the championship of Barberry Bonnie Girl by my Ch. Whinlatter Allercombe ex Ch. Quartzhill Oxeye Daisy. Longways Vesta whelped June 6—a fine litter of two males and one female, sired by Ch. Longways Quintius.—Mrs. Emory Alexander, Haverford, Pennsylvania

**HIGH RISING P.E.****CH. HIGH RISING HARDY PERENNIAL**

12.5.53 to 11.3.69

sire: Ch. Thorndale Alert

dam: Ch. Quartzhill Primula

Best In Club Specialty Shows 1956 and 1957

Dear little Hardy whom I have always loved very much and who for so many years was such a delightful friend died this morning. In another month she would have been sixteen years old.—Grant D. Green, Charlottesville, Virginia

**BREEDING BETTER NORWICH**

—The Norwich Terrier in Pursuit of Perfection—

by CONSTANCE LARRABEE

The Norwich Terrier breed continues in its pursuit of that elusive Standard of Perfection. Strides made by American breeders in type and uniformity are largely due to the English breeders' sporting spirit in parting (for over thirty years) with the best of their proven blood lines. Between 1958 and 1968 some outstanding imports have had a prolific influence on the breed.

The famous Upland Spring strain is prominent in the majority of today's American prick ear pedigrees and we are indebted to the Upland Spring Kennel, supreme for twenty years until Mrs. Howe Low's death, for Eng./Am. Ch. Ragus Goodfellow. Imported in 1958, Goodfellow was a Norwich with substance, style and a good rough coat. His daughter, Ch. Upland Spring Rube Wood, won the Specialty twice in 1963 and 1964. His son, Ch. Upland Spring Turkey, was the top winning Norwich in 1965 and his grandson was Ch. King's Prevention Hardy Bear, Sire of Ch. King's Prevention MacMillan, the 1967 Specialty winner. Goodfellow was the sire of Mrs. Curtis Read's Ch. Chidley Little Nell (Specialty BOS 1961 and 1965 and Dam of the 1964 Best Puppy and Dog in Match, Chidley Montague). For Newry he sired Mrs. Rita Haggerty's young Champion Newry's How About That.

Eng./Am.Ch. Whinlatter Allercombe Hiker, BOB Westminster 1965, has influenced the breed in both countries. Imported to Longways in 1958 by Mrs. Emory Alexander, this outstanding prick ear dog was the sire of England's great stud Ch. Whinlatter Charade, "The most influential stud the breed has had since World War II and a lovely type which he has passed on in abundance." In 1967 Hiker, aged eleven, sired Ralph Hilton's first Barbary litter. From this litter came Mrs. Alexander's Barbary Bonnie Belle, a potential champion.

Ch. Longways Felix by Hiker is the Sire of High Tor's Grange Gambit, owned by Mrs. Sydney Glass. Litter sister of Ch. King's Prevention Bourbon Tor and bred by Morris Dixon, Gambit rose from American-bred to BOS under Percy Roberts at the 1967 Specialty and also won the Senior Sweepstakes. She is the Dam of Currant Bun and Pinafore, two handsome puppies bred at the Grange Kennels by Mrs. Glass. Grange Pinafore is the only puppy sired in this country (before his untimely death) by Quartzhill Bartonina, who was imported by Warren Adriance.

In the Spring of 1962, Jim and Wit Hanning imported the 7-months old prick ear son of Eng. Ch. Whinlatter Charade. Now an American Champion, Whinlatter Johnnie is "A dog close to the ideal size called for by the Standard. He is a small, compact, gay terrier with plenty of substance for his size and an expressive, well-proportioned head with a true dark terrier eye." He sired the first American black & tan Champion Blu-Frost Jana and the 1968 Westminster BOS, Ch. Nod Hill's Melody is his granddaughter. Her Sire is Dolobran's Ch. Longways Hector who, in turn, claims Eng./Am.Ch. Whinlatter Allercombe Hiker as his grandsire.

At Nod Hill, Mrs. Philip Hewes' first Norwich were Ch. Whinlatter Johnnie's two daughters, Blu-Frost Krissie and Kathie—Dam of Ch. Nod Hill's Biscuit owned by Mrs. Powel Griffiths, who bred the '68 Specialty winner and '69 Westminster BOB, Ch. Shawnee's Cricket, son of the import Whinlatter Hesta.

Mrs. Theo. A. Randolph imported Jericho Ringleader to Oakley in 1965. By Ch. Jericho Gay Rascal, bred by the English breeder-judge Sheila Monckton, he is the grandsire of Henry Higgins of Pemberton, third generation in the winning Breeders' trio at the '68 & '69 Match Shows. Among Oakley's imports in the '50's were Wheatnor Ruff and Am.Ch. Wheatnor Merlin, the great grandparents of 1968 Best Puppy in Match, King's Prevention Tawny Wheat. Out of Our Little Mudpie, whose Sire is Ch. Pemberton Trot-On, BOB Specialty 1962, Tawny Wheat was bred by Mrs. Albert Hurline, a new breeder with definite breeding aims which augurs well for future litters under her Dunkirk prefix. American-bred Tawny Wheat's background—except for her maternal grandsire—is almost 100% British. Her Sire is Eng.Am. Ch. Ragus Rain Maker, a stud dog of repute on both sides of the Atlantic, bred by Marjorie Bunting and imported by Constance Larrabee in 1967. Rain Maker's great grandsire is Longways' Eng.Am.Ch. Whinlatter Allercombe Hiker. At King's Prevention, Rain Maker, top stud for 1968, continues to dominate this Kennel. His daughter, King's Prevention Sunshine by the import Ragus Rag Bag, was BOS Westminster 1969 and went on to win the Specialty, at which show Rain Maker's two children and three grandchildren were also winners.

In 1966 the Dean Bedfords imported Rain Maker's English son, Bill Sykes. One of many they have brought over to Pemberton during the last forty years, Bill is a young, well-buit, dark-eyed proven sire. Well on his way to his Championship, on more than one occasion he has displaced Rain Maker in competition. A beguiling trio of black and tan winners in the 1968 Prick Ear Puppy Classes, by Interfields Half-A-Bob, were out of Pemberton import Quartzhill Bargrange Dina; and their import Ch. Quartzhill Golden Thyme (Best Norwich in Match 1966-67) "has proved herself a standout for soundness, size, quality and type."

On the drop ear front, a welcome import to Mt. Paul by Mrs. John Winston is Ch. Nanfan Nyiad who completed her championship here to become the first English and American drop ear Champion, proving herself a worthy daughter of her famous sire, Ch. Nanfan Heckle, twice Best Norfolk (drop ear Norwich) at Crufts 1966-68. The Best Drop Ear Puppy in the 1968 Match and the Best Drop Adult in the 1969 Match was Nanfan Terrapin, also owned by Mt. Paul. Terrapin has an interesting history. Bred in England, she is by Ch. Nanfan Heckle and ex Foxhunter's Tally Ho exported by Mrs. Winston to Mrs. Taylor in 1966. Another Nanfan import is James Scharnberg's Nanfan Hobbit, a drop ear with the quick eye and keen nose of the inveterate hunter.

In 1958 Mr. & Mrs. Stanford Mallory returned to Wendover from England with Gotoground Foxhunter. He had a distinguished stud record at Wendover where, stamping his get with his unmistakable Gotoground quality, he sired more than 50 puppies. His most famous offspring, noted for their conformation and color, are the Champions Wendover Cobbler—Winners Dog 1962 Specialty; Foxhunter—Winners Dog 1964 Specialty; and Favor.

Bethway and Castle Point need no introduction to admirers of the drop ear Norwich. Top drop ear kennel for 1967, four times BOB Westminster, Bethways has generations of American bred Champions to the credit of their breeder, Barbara Fournier. Ch. Bethway's Miss Cricket, 1968 Westminster BOB, claims Bethway's early imports, the great foundation bitch Colonsay Kelly's Eye and Ch. Ragus Jimmy Joe as her paternal great grandparents. The handsome Bethway's brace, the Champions Bethway's Duke and Dutchess, are yearly show stoppers at Boston and Westminster.



Since 1930, Mrs. Stevens Baird has imported more than 20 drop ear Norwich and bred over 300 puppies at Castle Point. In 1965, Nanfan Hoppocket, following in many well-known drop ear footprints, was chosen with care and his get "all have small rounded heads, neat drop ears, black button eyes, outstanding bone and flaming red coats."

At River Bend, Miss Sylvia Warren breeds both prick and drop ear Norwich. Recent Quartzhill imports and their get grace this kennel. River Bend Simon (BOS Specialty 1969), is by the Howard Colhouns' import Whinlatter Jaunty ex Quartzhill Tawny Grisette; and Miss Warren's black and tan Quartzhill Nightshade is by Mr. Ralph Hilton's Interfields Hamlet, son of Eng.Am.Ch. Ragus Rain Maker. The star at this kennel is Ch. Quartzhill College Clothilde, known to her friends as Lacey. One of the soundest young bitches in the ring today, she is all charm and quality. Her litter brother is black and tan Quartzhill College Corin, owned by Mrs. Curtis Read. He is the Sire of Mrs. Read's 1969 Best Puppy and Best in Match, that lively black and tan beauty, Chidley Tiger Lily.

Pedigrees reveal that neither breeder nor dog can claim sole credit for a "top dog." Each sincere breeder and sound dog make their contribution to the improvement of the Breed. While English imports have been a major factor in our development, nevertheless from 1958 to 1968, our American-bred dogs, with two exceptions, have captured both BOB and BOS at our Specialty Shows and at Westminster.

On parade at the '69 Match, a strong group of young and happy American-bred Norwich appeared headed towards a promising future in the U.S.A.

## RAISE AND TRAIN

by BARBARA FOURNIER

**EXERCISE:** Despite his small size, the Norwich Terrier is an active, robust fellow and should have a sufficient amount of exercise to keep him fit. This can be provided in several ways.

For the Norwich that lives in a city apartment, and many do, regular walks on a lead will take care of most of his exercise needs. Also he should be given every opportunity to clamber about and frisk off the lead, provided he is safe from escape or injury.

A fenced-in run is advantageous for a dog in the suburbs but sometimes a dog can grow lazy and just lie around in the run. For this reason it is important to exercise him on lead between periods spent in the run.

The lucky Norwich that lives in the country has the best of it. He is a country dog and gets the best kind of exercise on walks across fields, over walls, and through cover.

All Norwich Terriers love to play. Catching and bringing back a ball is good exercise for the dog without involving too much hard work for his owner. "Tug-of-War," on the other hand, is not such a good idea as it can ruin the mouth of a young puppy and teach the dog to be over-aggressive at play.

**FEEDING:** The Norwich Terrier is a hardy dog by nature and a "good doer," but he must have a wholesome, balanced diet in order to maintain proper condition. This diet should include the basic elements of proteins, carbohydrates, vitamins and minerals.

As the dog is naturally carnivorous, or meat eating, the basis of his diet must be made up of meat. It is easy to provide wholesome meat thanks to modern packing methods. Most of the meat eaten by dogs is either beef or horsemeat. This can be either fresh, frozen, or canned. A pound of meat can usually be spread over three or four meals depending on the dog's size and amount of activity.

He should also have a good grade of dog meal added to the meat. This will provide carbohydrate elements and, generally speaking, if a dog gets the right amount of a good dog meal, he will not need any other vegetable matter in his diet. The dry meal should moisten to a crumbly texture. To this mixture should be added a vitamin mineral supplement in liquid or powder form to round out a good basic diet.

Every dog will welcome a change in his food once in a while. Lamb, chicken, liver, and cottage cheese are all good protein substitutes. Pork is not recommended and all fish and poultry should be carefully boned because they can splinter and cause grave damage to a dog's insides. The same can be said for steak and chop bones. With regard to chewing bones, the best idea is to offer nylon or rawhide toys rather than natural bones.

Most adult dogs are fed a large meal once a day. This is usually given in the evening or the late afternoon. Many dogs do better with a light snack at breakfast time and a less heavy meal at night. The decision as to once or twice a day feedings depends on the individual dog's needs. If he should develop an overweight condition he should not have two meals. This is especially true for terriers.

Fresh water should be down for your dog at all times.

**HOUSING:** The small size of the Norwich Terrier enables him to fit comfortably into the smallest environment, but his "big dog" personality makes him suitable for any home whatever its size.

In an apartment the Norwich should be provided with his own bed in a quiet, draft-free corner where he can be undisturbed but still be in contact with the family. His bed should be equipped with a cedar-treated mattress that will retard parasites.

If a Norwich spends any amount of time in a run, he should have the use of an outdoor shelter. This should be made of wood and large enough so that the dog can sit, stand or lie down in comfort. The shelter should be constructed so that the wind will not blow directly on the dog. The roof should be slightly slanted so that the dog can sit on it during wet weather or when the run is being cleaned, and rain can run off.

No matter how comfortable a run or outdoor shelter is, you should make certain that your Norwich has a generous helping of human companionship. He cannot get this sitting in a dog run. Neither should a Norwich be chained or tethered outdoors. Nothing will take the edge off his terrier spirit faster than this.

**LEADS AND COLLARS:** The best collar for a Norwich Terrier is a rolled leather buckle type with ring to snap on the lead. A choke collar of any type for obedience training should not be worn between sessions as the dog could get it hooked on something and strangle himself.

Some people have found the show lead to be most handy. This lead has a one-piece construction with an adjustable clasp at the collar end. While this lead is convenient, it is not as comfortable as a street lead should be and, with day to day wear, will not last long.

The lead to use is one of lightweight but strong leather or rawhide. It should be fitted with a strong snap.

Harnesses are definitely not recommended, and this is especially true for short-legged dogs. They (harnesses) encourage pulling and, in a young Norwich, this can lead to a distorted front assembly.

**YOUR PART IN TRAINING:** Concentrate on winning your dog's confidence so he will love and admire you. This will make his training easier, since he will do anything to please you. Basic training can be started at the age of three months. He should be taught to walk nicely on a leash, sit and lie down on command, and come when he is called. You must patiently demonstrate to your dog what each word of command means. Guide him with your hands and the training leash, reassuring him with your

voice, through whatever routine you are teaching him. Repeat the word associated with the act. Demonstrate again and again to give the dog a chance to make the connection in his mind.

Once he begins to get the idea, use the word of command without any physical guidance. Drill him. When he makes mistakes, correct him, kindly at first, more severely as his training progresses. Try not to lose your patience or become irritated, and never slap with your hand or the leash during the training session. Withholding praise or rebuking him will make him feel bad enough.

When he does what you want, praise him lavishly with words and with pats. Don't continually reward with dog candy or treats in training. The dog that gets into the habit of performing for a treat will seldom be fully dependable when he can't smell or see one in the offing. When he carries out a command, even though his performance is slow or sloppy, praise him and he will perform more readily the next time.

When you start training your dog, use your training voice, giving commands in a firm, clear tone. Once you give a command, persist until it is obeyed, even if you have to pull the dog to obey you. He must learn that training is different from playing, that a command once given must be obeyed no matter what distractions are present. Remember that the tone and pitch of your voice, not loudness, are the qualities that will influence your dog most.

Be consistent in the use of words during training. Confine your commands to as few words as possible and never change them. It is best for only one person to carry on the dog's training, because different people will use different words and tactics that will confuse your dog. The dog who hears "come," "get over here," "hurry up," "here, Rex," and other commands when he is wanted will become totally confused.

Training is hard on the dog—and on the trainer. A young dog just cannot take more than ten minutes of training at a stretch. Then you can gradually increase the length of time to about thirty minutes. You'll find that you too will tend to become impatient when you stretch out a training lesson. If you find yourself losing your temper, stop and resume the lesson at another time. Before and after each lesson have a play period, but don't play during a training session. Even the youngest dog soon learns that schooling is a serious matter; fun comes afterward.

Always try to end a lesson on a pleasant note. In nine cases out of ten, if your dog isn't doing what you want it's because you're not getting the idea over to him properly.

---

## VETERINARY AND GENERAL NOTES

### **Hip Dysplasia**

The word dysplasia means wrong shape and here refers to the ball and socket joint where the head of the femur fits snugly into the cavity of the pelvic bone.

It is believed puppies are born normal but their bones being soft are easily misshapen.

Hip structure, growth rate, angulation, and muscle size and development are all gene controlled. Inheritance plus diet and exercise influence the soundness of animals.

One should be aware the condition exists. Severe cases can usually be clinically diagnosed and any breeder or owner might suspect a Norwich puppy which was not athletic. They are noted for leaping onto laps and negotiating stairs by their third month. A condition which impedes the natural curiosity of terriers may cause it physical pain and mental frustration. Luckily the reported incidence of dysplasia in Norwich is infrequent and at present breeding attempts to eradicate this fault need not be at the expense of establishing breed type, size, and character.

It has been proved that normal parents do produce dysplastic get. As we know many inherited variants cause dysplasia, the frank discussions between breeders should prove more beneficial to Norwich than umteen "clear" x-rays.—Joan Redmond Read

### On Size

Whenever this subject (size) comes up, so many memories come flooding back to me—notes written by one of the most famous pre-war breeders Mr. W. E. West of Farndon fame, who said that he was concerned that the breed was getting bigger and that they should be of a size to be carried comfortably all day by a woman; Mrs. Hardy (Quartzhill) and Miss Macfie (Colonsay drop-ears) insisting to me in my early days that this is the smallest of the terriers; Mrs. Fagan telling me that bone was of vital importance and when I said that it was easier to get on bigger ones saying "in that case have bigger ones"; the first breed Standard I ever read saying that height should be 8 in. to 12 in. at the withers. A broadcast interview with the daddy of the breed "Roughrider" Jones when he said that he did not like the modern Norwich, they were bigger than in his day. Miss Macfie saying that they should be small enough to go into a 6 in. drain. Miss Tucker (Allercombe) saying that the small ones would be no good for work as they would not be tough enough to stand up to their natural foe. An all-round judge who has specialised in gundogs saying that backs are too short and that terriers could not turn in a confined space with such short backs. A terrier breeder of many years who is a countryman with a knowledge of working terriers saying that the long backs would make turning in a confined space difficult. Another all-round judge when querying the size of a small one saying that getting them smaller would bring whelping troubles.—Marjorie Bunting

### On Tails

The "set-on" is as important as the tail itself and effects the manner in which it is carried.

"We should remember that the tail is not just something which is stuck on the dog. as for example the ears are, it is the natural and continuous extension of his spinal column and as such is connected with the whole back from the withers onwards, and through the pelvis to the whole of the hind leg.

"From this it follows that where a tail is badly set on a dog often moves in the most unattractive fashion behind. It is not of course, the badly set on tail which is affecting its movement. Not being properly constructed the dog would move indifferently in any case; the badly set on tail merely draws attention to this, being all a part of the same condition.

"A dog's character is provided by a good tail, ears provide expression and the two coupled together supply style."—Stanley Dangerfield, *Our Dogs*—1958

### Ask the Judge "Why"

Exhibitors who want to learn should "ask the judge why?" and realize that "judging involves mental concentration." Therefore

1. "Never interrupt a judge during a breed assignment" . . . .
2. "Never ask a judge for an evaluation without your dog" . . . .
3. "Accept the judge's opinion with good grace. . . . Always realize that the most specific statements in a standard, such as those referring to height and weight, are sometimes less important than other requirements which are more difficult to understand, such as character, expression, slope of shoulder, placement of haunch bones."—From McDonald Daly's column in *Our Dogs*, England

## ENGLAND WILL NEVER BE THE SAME AGAIN

A red-capped dispatcher with a drooping red guardsman's mustache pushed us toward the door of the airplane where a stewardess was frantically beckoning us.

"Everyone's aboard but you and we're already to take off". But, my wife and I stubbornly held back.

"Until we see our terrier aboard we're not budging" my wife said firmly.

Three hours earlier when we arrived at London Airport from Philadelphia on our way to Munich, a stolid white-helmeted motorcycle policeman had taken the cardboard box containing our Norwich Terrier, Timothy to the quarantine station promising to bring him back when our plane to Munich was ready, but now there was no sign of dog or motorcycle.

England has long boasted that it's the only country in the world without the deadly disease of rabies because, they insist, no dogs are allowed into the country without spending six months in quarantine. In the case of transients like Timothy, the law permits the Royal Society for the Prevention of Cruelty to Animals to maintain an isolation kennel where dogs can be held temporarily between flights without setting foot on English soil or otherwise contaminating the Empire.

While the pilot was shouting impatiently from his perch in the nose of the plane, the dispatcher was furiously phoning the RSPCA asking where the devil the dog was.

At last the stolid policeman roared up on his motorcycle and from the red van following him, Timothy, still in his cardboard "Pet Kit" as the airlines call it, was lifted to the cargo hold.

Only then my wife and I stepped triumphantly aboard. The dispatcher smiled proudly and the policeman, his arms folded, waited till we took off.

We had hardly stowed away our books, overcoats and duty-free whiskey and buckled our seatbelts, when the steward approached us:

"Sorry to bother you sir but your dog has chewed his way out of his box and escaped." Seizing our belongings, we dashed off the plane. The stolid policeman was still standing where we had left him, but now he was staring open-mouthed at the open cargo hatch.

"How the hell did the dog get out?" I shouted at him.

"Sorry sir, but he appears to have simply jumped from the hatch" and he pointed up to the door a good eight feet above the ground.

"But why didn't you grab him?"

"He ran away" the policeman said. His voice was choked, his eyes moist. My wife tugged at my sleeves. "Leave the poor man alone. Don't you see he's about to cry?"

"Why should he cry?", I protested. "It's our dog."

"But it's his England".

At this point the dispatcher interrupted his bawling into a microphone to report: "The airport police have been deployed, sir, and all airport personnel have been alerted. "He'll not get far", he added, smiling reassuredly.

The loudspeaker on his intercom belched and a hoarse voice said:

"Terrier seized at Gate 18. Where do you want him?"

"Gate 15", we all shouted simultaneously. From the plane came ominous sounds of engines starting and I shouted at the dispatcher to hold the plane.

But the policeman intervened: "Sorry but you won't be able to take the dog now, sir".

"And why the devil not?" I said contemptuously.

"He's touched English soil". Then in answer to our bewildered looks he added: "He'll have to stay in quarantine for observation."

"For how long?" we both asked.

"Just six months" he answered coolly "Unless of course you get special permission to get him out sooner from the Minister of Fish and Food, personally." He added the last word as if to intimate the futility of even trying.

"What", my wife asked, ignoring the sally, "have fish or food to do with our Timothy?"

But the answer was drowned out as our erstwhile plane, with a deafening roar, moved out to the runway.

"I did my best to utter a you-can't-do-this-to-me snort, but it came out an agonized shriek.

"Can't you see you're killing my husband?" my wife protested. "He had a bad heart to begin with. And now. . . ."

Horried, the dispatcher shouted into the intercom for a wheel chair. There was nothing wrong with my heart but my mind was teetering on the brink of lunacy and when the chair arrived I fell into it.

Just about then another red-capped dispatcher arrived carrying Timothy in his arms. His ears cocked, his tail wagging furiously and a broad canine grin on his face, Timothy gave every indication he'd been having a splendid time racing about London Airport all alone. My wife took him and set him down on the counter but once again the policeman thrust himself forward:

"His feet . . . his feet!" He shouted in anguish.

Offended, my wife turned on him: "What's wrong with his feet?"

"They're touching . . . . .they're touching . . . . .England".

He seized the dog, lept on the motorcycle and sped off to quarantine once more.

At last an airline hostess turned up and promised to get us on the next plane to Munich. Meantime she would use her influence, she promised, with the Minister of Fish and Food, personally, if need be. Then she escorted us to the airport hospital where I was put to bed.

Eight hours later we were taken by the airline hostess to a plane headed for Zurich, whence, she assured us, we could fly to Munich. The Minister of Fish and Food, she added, had graciously released Timothy on condition he leave the country immediately.

"You might think he was a criminal alien", my wife said bitterly.

The hostess assured us he would be brought to the Zurich plane but when we arrived at the gate another red-capped dispatcher reported he'd not seen hide nor hair of a dog. Once again a clamor of angry voices shouting curses arose, this time led by the Swiss Airline Agent who picked up a phone and blasted the RSPCA with such a torrent of invective that I feared for Switzerland's ancient neutrality. When he hung up, he suggested we get aboard. The dog, he had been assured, was on his way. We took our seats apprehensively and immediately made what the State Department calls "Contingency Plans". If the dog did not get aboard, my wife would fly on alone. I would follow when I found him. The Swiss agent promised to warn me in time.

The plane's staff made ready for departure. Seat belts were fastened, smoking forbidden, hand baggage stowed. As the steward was about to shut the big door the agent on the ground signalled me frantically. I kissed my wife goodbye and for the second time that day, abandoned the plane.

Drained of emotion, I stood outside the plane speechless staring across the airfield. Perhaps I thought this was all a dreadful nightmare. Maybe I would suddenly wake up with Timothy in my lap zooming toward Munich. Just then something caught my eye—the sun glistening on the white helmet of a motorcycle policeman. I shouted to the dispatcher and pointed. The dispatcher barked into the intercom. The plane's engines fell silent. The baggage hatch was opened. A red box big enough and strong enough to hold a herd of wild pigs with Timothy's dejected face peering from behind the bars was lifted through the hatch. The landing platform was moved forward and the door opened. And once again I stepped aboard.

The last I saw of him, the policeman was standing belligerently with his eyes fixed on the hatch, his hand on his pistol holster, ready to shoot if he ever saw Timothy's face again on English soil.

—Charles W. Thayer

*Charles W. Thayer, author, former diplomat, former director of The Voice of America and an expert on Soviet affairs, died after a heart operation this last August in Salzburg, Austria, where he had a summer home. The above account of the perils of London Airport was received by Mary Baird a few short days before she read of his death in the August twenty-ninth New York Times. Our deepest sympathies and thanks to his family for their kind permission to print this article.*

---

## OUTSIDE THE U.S.A.

### NORWICH TERRIER CLUB (ENGLAND) 1969 HANDBOOK

The excellent pedigree section which includes all C.C. winners show and judge plus the numerous photographs in the kennel advertisements should appeal to all P.E. Norwich breeders here. This year's publication includes informative articles by Mrs. M. J. Taylor and Mrs. R. Panks plus accurate records of all club trophies.

Copies may be ordered directly from the club Sec't. Major N. Bradshaw, The Nook, Portland Park, Kirkby in Ashford, Nottingham, England.

## MEXICO

A Report from Sam Fuller, Criadero Britannia Kennel, Mexico City

My keen interest in Norwich began 3½ years ago with Quartzhill Kingcup, a beautiful little red dog imported from Mrs. Hardy. As a result of so much interest at the shows and two bitches, Quartzhill Orchis—black and tan—and Ragus Red Ribbon, I formed 'Criadero Britannia' Kennel. The original dog, whose call name is Kip, completed his Mexican Championship (three certificate points under three different judges) before he was a year old. He has since become an International Champion (four C.A.C.I.B. Certificates under Mexican, English, American and Canadian judges). Ribbon has also achieved her Mexican Championship. Orchis, Bluey to her friends, has been busy giving two beautiful litters, so is still one point short of her Mexican Championship. The first litter produced Tina, now Mex.Ch. Britannia Black Ginger and Chestnut, Britannia Black Sapphire, who has placed twice and won Group IV in expositions not sponsored by the Mexican Kennel Club. Bluey again scored very highly five months ago with a litter of three very promising dogs, one of which has been sent to Veracruz, Mexico.

We have quite small shows in Mexico City, usually 400 entries. They tend to be rather friendly and relaxed affairs. However, there can be some very stiff competition between North American, Colombian and local breeders at the once-a-year International Exposition where the C.A.C.I.B. is awarded. As yet, there has been no foreign Norwich competition against mine. Also, many North American breeders compete in national shows for Mexican championship points.

All my Norwich seems to thrive here in spite of the mild and quite dry climate, but they usually require stripping every six to eight months. The altitude has not dulled their senses, as they are all great little hunters, having caught a varied assortment of mice and unfortunately several sparrows that came a bit too close!



## NOTES ON THE HORN

### RATTING

In the summer the Brown Rat may be found along any stream, especially those near towns or any polluted by sewage or offal. He is quite at home in the water and can swim under the surface for amazing distances. For a quiet evenings stroll, it is only necessary to take along the prodder. The rats will be out feeding and if you draw quietly along the bank the terriers will soon wind one. The rat will immediately dive and swim under water. If the stream is clear, you will be able to see him swimming along. His objective will be to get to his hole as quickly as possible; so if you see that he is reaching the bank throw a stone just in front of his nose. That should turn him back into the stream. He will come up for air, but if the terriers don't see him throw another stone and cheer them on—they will soon get to know that the ripple caused by the stone is their guide. The rat soon tires of this underwater swimming and will show himself more and more often until the dogs get him. Some dogs become very clever at this hunting in the water and will put their heads underwater to grab a rat. One old dog of mine would dive for the rat and come up



with it in his mouth. If the rat does manage to get into a hole, you can have a go at digging him out with the prodder. If it is a deep hole you can leave him. This form of ratting is very unscientific, but I prefer it to all others.

—Dan Russell, *Working Terriers*

### COMMENTS ON OBEDIENCE TRAINING AND NORWICH

... I have owned and trained only three Norwich so this hardly makes me an authority on the subject. However, I'm in the unique position of owning half of the degree-winning Norwich since 1966, two with C.D.'s (Companion Dog) and one with a U.D. (Utility Dog).

It is a rare sight to see a Norwich being shown in the Obedience ring. Since I started in 1966, only three other Norwich have qualified, River Bend Tory U.D., Ginger Peaches C.D., and Helen T. Hill C.D. 1969 has only one Norwich on record to date, Helen T. Hill, of California, having earned her C.D. Undoubtedly it will be the only one this year, unless my male settles down and gets the two remaining legs of his C.D.X. (Companion Dog Excellent).

I have gotten Obedience degrees with other breeds, German shepherds and a poodle, and I don't think training a Norwich is any more difficult. I do feel that bitches are much easier to train than dogs. They are more amenable and seem to care much more whether they are pleasing their handler. Possibly I make this observation because right now I am struggling to get my C.D.X. with a very real challenge who is a male and an utterly loveable clown.

In showing a Norwich in Obedience one very satisfying thing is, whether you really deserve it or not, that the credit and the compliments you receive are truly overwhelming. Should your dog fail you miserably, still the praise is heaped on for your patience and fortitude in merely showing a Terrier. Everyone seems to be firmly convinced that all Terriers are next to impossible to train. I firmly believe that to train any dog of any breed requires infinite patience and a great deal of consistent practise.

At any Obedience Trial you will see dogs from the Working Group or any other group make completely unexpected errors and fail to qualify. In every breed some dogs learn quicker and are more reliable than others. I believe the whole thing can be boiled down to the individual dog. My Tuffet was in her second year when she earned her Utility Dog degree. My Thomas is now over three and has only his C.D. and one leg on the C.D.E. Although he knows all the open work, so far he has chosen to do it all together only once in the ring.

Training Thomas to retrieve the dumbbell was almost impossible. Many times I almost gave up any hope of showing him in the open classes. He is well-suited for those who believe Terriers are not retrievers. After almost a year of concentrated training, he now will perform on command—when he's in the mood! I labored through the usual progress and lapses with Tuffet, but once she learned, the rewards were numerous. At my request she will go upstairs and bring me my slippers or a stuffed toy or my sneakers, all this provided I have left my closet door open!

I have a most delightful memory of the time I was at Bethany Kennels to bring home my first Norwich. A puppy about seven weeks old was pleading with everyone she met to throw her a tennis ball. The difference in size and shape of ball and pup was almost imperceptible. If anyone succumbed to those begging eyes and threw the ball down the corridor, she became a small streak, arriving at the end almost with the ball. She would grab it I don't know how—it was much too big to fit in her mouth—rush back and beg another go. That little Norwich was a natural born retriever if I ever saw one.

There is no more rewarding hobby than obedience training a Norwich. The sense of accomplishment, the tremendous pride in achievement, but above all the rapport that you attain with your dog is something hard to appreciate until you and your dog have done what seemed the impossible and won the coveted Utility Dog Degree.

—Nancy Parker (Mrs. Will A.)

---

### BEGINNING OBEDIENCE TRAINING

Terriers are not known for dutiful performance in the Obedience ring. They are bred to be enthusiastic about digging and the pursuit of rodents and foxes. Here stubbornness, persistence and independence pay off. Norwich are Terriers. Therefore, if you plan to do Obedience Trial work, pick out the bravest, most energetic puppy you can find. It will be worth it, even though he will be harder to live with for a few months.

House training starts when he is old enough to go through the night without soiling his bed, usually about three to four months. Give him lots of exercise and games and wait until he is about eight months old to join a beginners class. In the meantime it helps to tie him in a given spot during your meals so that he will learn restraint. Do not sympathize if he fusses; ignore him. And when you call him make sure that he comes. Start him in the habit of completing commands. Try calling him when he is on a lead and play and praise when he comes.

The Norwich in Obedience can be very cooperative, but his handler must have a positive approach. He must be gentle, firm and generous with praise. Your terrier may refuse to learn an exercise, but don't lose your temper. It will undo weeks of work. Keep repeating the exercise every day and always stop before your patience ebbs. A poodle may learn it in a day, but remember you are training a Norwich, so you must be persistent and stubborn. Eventually it will come—and once learned, it sticks.

Short practise sessions at home, not longer than ten minutes, are best. Longer ones tend to bore all concerned and you do not want him to get stale. The day will come when your Norwich will be ready to show in Novice Obedience. This is fun and worth all that work. But best of all your dog will never forget his manners—and whether or not he gets his degree, he will be a far better companion.

—Phyllis Williams (Mrs. John G.)

---

### NORWICH NOISES

My Hay Girl Blossom and Longway's Vulcan had four male pups last December. Happy Girl Blossom, eight and a half years old, is mother of Mrs. Alexander's Chs. Longways Genius and Nobby.—Mrs. John K. Ewing, Berwyn, Pennsylvania

Bethways Muffin and Lime Tree Soames (Bloodhound) are our house dogs. Fast friends, they are a delightful twosome. Muffin belongs to fourteen-year-old Bobby and has learned the fine points of various endeavors—excellent hockey player, pingpong and football. Soames is better on the defensive unit.—Nancy Lindsay (Mrs. Robert V.)

Tammy is the greatest. Right now she is curled up at my feet. Four grandchildren and their mother were here last week from out of state—Tammy seemed to prefer children to adults. My wife was skeptical about another dog, but her 'take over' by the children was the clincher.—Morton D. Kraus, Canton, Ohio

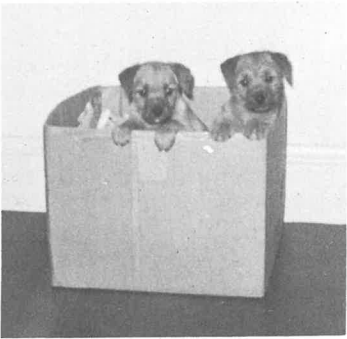
Grundoon and Beau Pierre are busy finding moles and chasing our barnyard geese away from the flower beds. I am afraid the puppy will never win an obedience test, but he certainly is venturesome and cheerful.—Mrs. Nathaniel Coolidge



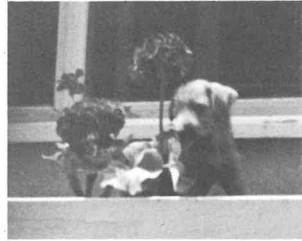
Mr. Thayers "TIMOTHY"  
(CASTLE POINT LAMPREY)



MUFFIN and Soames the bloodhound after their evening meal



Mrs. Pearson's Winnie's litter  
at 2 mos.



The Havre's  
NEWRY'S RED IMP



Mrs. Morrison's/  
GARNAWAY NAILER



Mr. Krause and TAMMY



Mrs. Dombrowski's SEE HOUSE BRAN MUFFIN

Just one of the most enchanting things that has happened in our lives. She has captivated us all, including our five labradors and young Scottish Deerhound. No point shows yet, but two group seconds in matches at four months. She has proved herself as a worker also, with squirrels and mice. We thoroughly enjoyed the Match at Nod Hill.—Mrs. B. Thompson Birdsell

As nobody in this locality had ever seen a Norwich Terrier before, I am delighted to say that our Seehouse Bran Muffin, D.S.—now six months old—is growing up to be a credit to the breed and making friends wherever she goes.

"Muffie" is such a happy, healthy little dog—bright, intelligent, so loving and a constant joy to my husband and myself. Her sporting instinct is obvious. She also guards our home and car diligently with all of her 12 lbs.—Mrs. John C. Dombroski, Pittsford, New York

John Jay Jones, son of Jongo Jones and Bethways Mr. Kennedy is a "fluffie". He is both handsome and charming and I suggest a new Norwich tangent. I know of three others.—Mrs. Fifield Workum

We missed our Pemberton Julia, who passed on at fourteen and a half years last January, so much that we decided on another. This time it's a Drop Ear male, Newry's Red Imp. He's aptly named—a real little imp—a love.—Mae Havre (Mrs. M. Timothy Havre)

Quartzhill Bay is now 13 months old and very handsome. He won a Blue and one point in the Boston show and has a beautiful head and coat. He shows desire to become a father and might sire a handsome litter.

—Mrs. Herbert Jaques, Wenham, Mass.

Bethways Leith is positively the "Belle of Buffalo." If I had a hundred like her they'd be gone in twenty minutes! —Mrs. Clinton R. Wyckoff, Buffalo, N. Y.

"Wickie" (River Bend Hardwick) is an utter joy to me and great company as I am alone. He is a fine little watchdog and gay and friendly. I can't imagine being without him.

—Mrs. Charles G. Mixter, Brookline, Mass.

My Bethways Angus has the best dog trait of all—he never leaves the property. My Peke has given up trying to lose him. Would be interested in results with Obedience work—depressed my little fellow so much I gave up.

—Mrs. Armin Landeck, Litchfield, Conn.

We are very proud of our first Norwich. They're rare here—Biffin (Kentfield Dusty Margaret) makes the second—so we feel very important. She is most intelligent, affectionate and loves her home—really runs it with her velvet paw.

—Mrs. Henryetta Lemon, Cincinnati, Ohio

Ickworth Trinket is just enchantment. I am delighted to have become a Norwich fan.

—Helen A. Todd, Washington, D.C.

Constance Larrabee tells me Rusty is the oldest surviving puppy bred at King's Prevention. She will be 15 on August 14th. Besides, I think she is the most wonderful dog bred anywhere.

—Mrs. John F. Bennett, Chevy Chase, Md.

Grand Smudge is our pride and joy—very intelligent, likes to go fishing and swimming in the lake on weekends, gets very excited when I catch a fish. People who have never owned a Norwich have definitely missed something.

—Mrs. C. M. Taggart, Nashville, Tenn.

On the golf course, River Bend Quaker Lady carries her own golf ball—as we play, a trick she picked up herself. Rarely does she lose the ball—even though she may chase a squirrel or rabbit—back she comes to where she dropped it, picks it up and runs after us.

—Mrs. Peter Paine, New York City

Souther (Knollwood Amfortas) was three February 17, looks very much like his sire Gotoground Foxhunter—has fine dark eyes and red coat. A perfect pet.

—Helen J. Brodt, Upper Montclair, N. J.

**MRS. ALAN PRYCE-JONES (MARY JEAN KEMPNER)**

The untimely death of Mary Jean has brought real sorrow to her friends. To Norwich Terriers it means the loss of a tremendous enthusiast. Though her first interest did not lie in the show ring she gained a championship with her first Norwich, River Bend Jiffy and raised a litter of five from her by American Ch. Farndon Romeo. Of these five three became champions. Jiffy lived to a ripe old age always Mary Jean's devoted companion. Next came Quartzhill Mimosa who travelled with her everywhere and was in Portugal and in Paris with her and her husband until just before her life ended so swiftly and tragically. From the hospital she wrote arranging for Mimosa's comfort and with such uncomplaining courage. No one that I have ever known received from and gave more love to her little dogs.

Mary Jean knew better than most how to enjoy life. She spent many summers in her house in Portugal and her charming and just published book "Invitation to Portugal" is written with first hand knowledge and understanding of that country. She leaves an only son Daniel Thorne. To her husband Alan Pryce-Jones, to Daniel and to her mother Mrs. Kempner the Club extends its deepest sympathy.

**CLUB ANNOUNCEMENTS AND REPORTS****OFFICERS—THE NORWICH TERRIER CLUB—1968 TO 1969***President*—Miss Sylvia Warren*Secretary*—Mrs. John L. Winston*Vice President*—Dean Bedford*Treasurer*—Stanford C. Mallory*A.K.C. Delegate*—Morgan Wing, Jr.*Bench Chairman*—Mrs. James Hanning*Governors*—Mrs. Donald W. Fournier, Mrs. Sydney W. Glass, Mr. James B. Hanning,*Trophies*—Mrs. R. Grice Kennelly

Mrs. Sterling Larrabee, Mrs. Philip Hewes, Mrs. Stanford C. Mallory, Mr. James F. Scharnberg.

**THE GOVERNORS' MEETING, SEPTEMBER 27, 1969**

The Governors wish to express a unanimous vote of thanks to Mr. Kahn for the many years he has kept the tally of points for the Annual Trophies. He has now moved to Florida which makes it too difficult. His loyal service is gratefully appreciated.

Only two bills will be sent to subscribers, January and June. If not paid by August subscriptions will be terminated. It is regretted, but this course must be held to, to cut down paperwork and postage expense of reminders. A new subscription and purchase of individual back issues will assure a subscriber receiving all issues.

The Club Match Show date and location will be forthcoming in the Spring issue. All Norwich owners are cordially invited to participate.

Mrs. Hanning announced that Mrs. Riggs will judge the regular classes and Mr. Murphy the puppy Sweepstakes at the Specialty in June.

## WELCOME TO NEW MEMBERS

We welcome all new members to the Norwich Terrier Club. You are now entitled to the newsletter and to compete for various trophies at the Specialty and the Match Shows, also to attend and vote at meetings.

Please do not hesitate to call or write if I can be of any help. Also please notify me of any new litters.—Anne H. Winston, Secretary

Mrs. John L. Winston, Mt. Paul Farm,  
Gladstone, N. J. 07934 (201) 234-0666

### New Members:

Mrs. Sybil Ittman, Dorset, Vermont  
Mrs. Henry G. Simonds, Brookline, Massachusetts  
Mrs. Alven Kerschner, New York, New York  
Mr. Walter Hochschild, New York, New York  
Mr. H. F. Krimendahl II, New York, New York  
Mrs. R. W. Snowden, Allison Park, Pennsylvania  
Mrs. Frederic B. Underwood, New York, New York  
Miss Victoria Willock, Princeton, New Jersey, *Junior Member*

## THE AMERICAN KENNEL CLUB

### Revision in the Standard for Norwich Terriers

The Board of Directors of The American Kennel Club has approved the following revisions in the Standard for Norwich Terriers, submitted by the Norwich Terrier Club: Under "Jaw," in the first paragraph, delete:

"Faults:—A mouth badly over- or under-shot."

and substitute the following:

"Faults:—A bite over- or undershot."

Delete the first sentence following the heading "Color," which presently reads:

"Red (including red-wheaten), black and tan or grizzle."

and substitute the following:

"All shades of red, wheaten, black and tan and grizzle."

APPROVED JUNE 10, 1969

On October 15 the A.K.C. mailed every Norwich Terrier Club approved judge a copy of the breed standard in their convenient Terrier booklet. This new service gives added incentive to judges to familiarize themselves with the significance of our official standard.

## LITERATURE

NORWICH TERRIERS U.S.A. 1936-1966. The first history of Norwich Terriers in America, edited by Constance S. Larrabee and Joan R. Read; 180 pages, 350 photographs; \$5.50. From: Mrs. John L. Winston, Secretary. The Norwich Terrier Club, Mt. Paul Farm, Gladstone, N. J. 07934.

N. T. CLUB FLIER. The illustrated, Club approved standard of perfection. Give one away with each puppy to new owners. 5 for \$1.00 from Mrs. John L. Winston, Secretary, The Norwich Terrier Club, Mt. Paul Farm, Gladstone, N. J.

NORFOLK TERRIER CLUB HANDBOOK, 1968 (England). The first handbook on the Norfolk (D.E. Norwich) since breed division in 1964; \$2.00 from Mrs. John L. Winston, Secretary, The Norwich Terrier Club, Mt. Paul Farm, Gladstone, N. J.

HOW TO RAISE AND TRAIN A NORWICH TERRIER. Barbara S. Fournier. An attractive, informative book for the pet owner, breeder and exhibitor. \$1.00. From

Barbara Fournier, Bethway Kennels, Bethany, Connecticut 06525.

**THE NORWICH TERRIER.** Sheila Monckton, Stretton Hall, Stafford, England. \$2.50. The first English Norwich Book.

**WOOF, THE HALF-PINT BEAR CHASER.** The story of a Jones Terrier who chased grizzly bears. Privately reprinted from the original. \$2.50. From: Mrs. Philip Hewes, 345 Waterville Road, Avon, Conn.

---

### ANNUAL TROPHIES 1969

#### Westminster Kennel Club

**THE ALDEN BLODGETT TROPHY** for BEST OF BREED

Ch. Shawnee's Cricket—br. owned by Mrs. S. Powel Griffiths

#### Specialty Show, Greenwich Kennel Club, June 7

**THE NORWICH TERRIER CLUB CHALLENGE BOWL** for BEST OF BREED

King's Prevention Sunshine—br. owned by Mrs. Sterling Larrabee

**THE G. GORDON MASSEY CHALLENGE TRAY** for BEST OF OPPOSITE SEX

River Bend Simon—br. owned by Miss Sylvia Warren

#### Match Show, Avon, Connecticut, September 24

**CH. JERICHO HILL VIXEN SALVER** for BEST PUPPY IN MATCH

Chidley Tiger Lily

**KING'S PREVENTION JOHN BULL TROPHY** for BREEDER OF BEST PUPPY IN MATCH

Mrs. Curtis S. Read

**CHIDLEY GEORGE GORDON TROPHY** for BREEDER BEST ADULT IN MATCH

Mrs. Joy Taylor

**MT. PAUL TROPHY** for BEST DROP EAR IN MATCH

Nanfan Terrapin—owned by Mrs. J. Winston

**BLU-FROST TROPHY** for BEST PRICK EAR IN MATCH and

**PORT FORTUNE BOWL** for BEST NORWICH IN MATCH

Chidley Tiger Lily

---

### ANNUAL TROPHIES (1968)

**PARTREE BOWL** for BEST DROP EAR PUPPY

Bethway's Robin—Mrs. D. Fournier

**MAPLEHURST FARM BOWL** for BEST DROP EAR ADULT

Bethway's Little Girl—Mrs. D. Fournier

**HIGH RISING BOWL** for BEST PRICK EAR PUPPY

King's Prevention Tawny Wheat—Mrs. S. Larrabee

**JOHN PAUL JONES BOWL** for BEST PRICK EAR ADULT

River Bend Simon—Miss S. Warren

**RIVER BEND BOWL** for BEST IN OBEDIENCE COMPETITIONS

Triscuit's Tuffet—N. Parker

#### New Trophies

The N.T.C. offers its Medal to the breeder of BOB and BOS and Best Brace at Westminster Kennel Club.

The High Rising Hardy Perennial Bowl will be added to the annual special trophies for members. A replica to be given to the winner of the Veterans Class (over eight years of age) at the autumn club event.

---

The Club Medal will be offered at the following indoor shows:

<i>Place</i>	<i>Date</i>	<i>Judge</i>
National Capitol Washington, D. C.	Nov. 22	I. Schoenberg
Maryland K.C. Baltimore	Nov. 23	E. Gamble
Philadelphia K.C.	Dec. 6	J. Trullinger
Eastern Dog Club Boston, Mass.	Dec. 13	H. Tyler
Westminster K.C. New York, N. Y.	Feb. 9-10	Mrs. P. S. P. Fell
Elm City K.C. New Haven, Conn.	Feb. 22	Dr. Huggins
International K.C. of Chicago	Apr. 4-5	Mrs. C. S. Read

Entry blanks are available from show supt. George Foley, 2009 Ranstead Street, Philadelphia, Pa. Entries close 3 weeks prior to scheduled date.

---

## AROUND THE RING

### NORWICH TERRIER SPECIALTY SHOW

Judge: MR. T. BRESNAHAN

#### Class Entries

Greenwich, Conn.

June 7

#### Puppy, dogs. (1)

1st and Reserve WD—BETHWAY'S RINGO. Mrs. Donald Fournier (Barbara S. Fournier, handler). Breeder, Aloyise H. Pomeroy. By Ch. Bethway's John—Colonsay's Aring.

#### Novice, dogs. (1)

1st—GARNAWAY NAILER. Barbara and Carol Morrison. Breeder, James F. Scharnberg. By Nanfan Newsprint—Bethway's Holly Puddin.

#### Bred by Exhibitor, dogs. (1)

1st—BBE and Winner's Dog—RIVER BEND SIMON. Miss Sylvia Warren. Breeder, owner. By Whinlatter Jaunty—Quartzhill Tawny Grisette.

#### American-bred, dogs, prick-eared. (1)

1st—KING'S PREVENTION UPLAND JOCK. Mrs. Sheila Hurline. Breeder, Constance S. Larrabee. By Ch. Ragus Rain Maker—Ch. Upland Spring Magpie.

#### Open, dogs, drop-eared. (2)

1st—NANFAN TERRAPIN. Mrs. John L. Winston. Breeder, Mrs. M. J. Taylor. By Ch. Nanfan Heckle—Foxhunter's Tallyho.





Mary Jean Pryce-Jones and Friends



INT. MEX. CH.  
QUARTZHILL KING CUP,  
Judge Manuel Ibarra Mora  
and Sam Fuller in  
Mexico City

2nd—WENDOVER HALF POUND. Mrs. Stanford C. Mallory. Breeder, owner. By Ch. Bethway's Pound—Wendover Eliza.

**Open, dogs, prick-eared. (2)**

1st—BLU-FROST PETER PIPER. Mr. and Mrs. James B. Hanning. Breeders, owners. By Ch. Whinlatter Johnnie—Ch. High Rising Barmaid.

2nd—QUARTZHILL COLLEGE CORIN. Mrs. Curtis S. Read. Breeder, Mrs. E. J. Smith. By Quartzhill Bartonina—Foxybrook Emona.

Winners Dog: RIVER BEND SIMON

Reserve: BETHWAY'S RINGO

**Puppy, bitches. (5)**

1st—KING'S PREVENTION UPLAND WHIM. Constance S. Larrabee. Breeder, owner. By King's Prevention Frodo—Ch. Upland Spring Maggie.

2nd—BETHWAY'S BABY GIRL. Mrs. Donald Fournier (Barbara S. Fournier, handler). Breeder, owner. By Ch. Bethway's Pensum—Ch. Bethway's Little Girl.

3rd—RIVER END TRILBY. Fred B. and A. C. Underwood. Breeder, Miss Sylvia Warren. By River Bend Simon—Quartzhill Trillium.

4th—LUCY LOCKET OF GRANGE. Mrs. Sydney W. Glass. Breeder, Dr. C. R. Hower. By Ch. Longways Quintius—Hickory Springs Gay Lucy.

**Novice, bitches. (1)**

1st—BLACK ROCK FLORA. Phyllis G. Williams. Breeder, owner. By River Bend Simon—Ch. Upland Spring Betsy.

**Bred by Exhibitor, bitches. (4)**

1st—KING'S PREVENTION FUN FAGAN. Mrs. Sterling Larrabee. Breeder, owner. By Bill Sykes—Ch. Upland Spring Maggie.

2nd—PENSUM'S FOLLY. Mrs. Samuel Ferguson, Jr. Breeder, owner. By Ch. Bethway's Pensum—Riverbend Daisy.

3rd—BLACK ROCK FLORA. Phylliss G. Williams. Breeder, owner. By River Bend Simon—Ch. Upland Spring Betsy.

4th—BETHWAY'S DIXY. Mrs. Donald Fournier (Barbara S. Fournier, handler). Breeder, owner. By Ch. Bethway's Little Mister—Bethway's Miss Nancy Dee.

**American-bred, bitches, drop-eared. (2)**

1st—BETHWAY'S PENNY KENNY. Barbara S. Fournier. Breeder, owner. By Ch. Bethway's Mr. Kennedy—Bethway's Penny.

2nd—CREAM PUFF OF C.J. Carolyn and James M. Plyre. Breeders, owners. By Ch. Bethway's Tony—Bethway's Miss Nora of CJ.

**American-bred, bitches, prick-eared. (3)**

1st—KING'S PREVENTION TAWNY WHEAT. Mrs. Sterling Larrabee. Breeder, Mrs. Sheila Hurline. By Ch. Ragus Rain Maker—Our Little Mudpie.

2nd—KING'S PREVENTION GAY VIXEN. Mrs. Donna Cahill. Breeder, Constance S. Larrabee. By Ch. King's Prevention MacMillan—King's Prevention Gay Ragus.

3rd—BLACK ROCK FLORA. Phyllis G. Williams. Breeder, owner. By River Bend Simon—Ch. Upland Spring Betsy.

**Open, bitches, drop-eared. (2)**

1st—MT. PAUL NANFAN. Mrs. John L. Winston. Breeder, owner. By Tarheel's High Trump—Ch. Nanfan Nyiad.

2nd—BETHWAY'S REBECCA. Mrs. Donald J. Fournier (Barbara S. Fournier, handler). Breeder, Barbara S. Fournier. By Ch. Bethway's John—Bethway's Miss Quimp.

**Open, bitches, prick-eared. (4)**

- 1st—**KING'S PREVENTION SUNSHINE.** (and winner of BOW). Constance Larrabee (John T. Brennan, handler). Breeder, owner. By Ch. Ragus Rain Maker—Ragus Rag Bag.
- 2nd—**QUARTZHILL TRILLIUM.** (and Reserve) Miss Sylvia Warren. Breeder, Mrs. E. Hardy. By Quartzhill Box—Quartzhill Delrose of Goldencross.
- 3rd—**NOD HILL'S HARMONY.** Mrs. Philip Hewes. Breeder, owner. By Ch. Longways Hector—Blu-Frost Krissie.
- 4th—**QUARTZHILL MUSK ORCHID.** Mrs. Curtis Read. Breeder, Mrs. E. H. Hardy. By Quartzhill Bartonina—Quartzhill Millet.

**Best of Breed Competition. (5 Champions Present)**

Winners Bitch: **KINGS PREVENTION SUNSHINE** and Best of Winners Reserve: **QUARTZHILL TRILLIUM**

- 1st—**KING'S PREVENTION SUNSHINE.** Constance Larrabee. Breeder, owner. By Ch. Ragus Rain Maker—Ragus Rag Bag.
- 2nd—**RIVER BEND SIMON.** Miss Sylvia Warren. Breeder, owner. By Whinlatter Jaunty—Quartzhill Tawny Grisette.

**Stud Dog Class. (2)**

- 1st—**CH. RAGUS RAIN MAKER.** Mrs. Sterling Larrabee (John T. Brennan, handler). Breeder, Mrs. M. G. Bunting. By Ch. Interfields Half-A-Bob—Ragus Rose Honey.
- 2nd—**RIVER BEND SIMON.**

**Brace Class. (1)**

- 1st—**KING'S PREVENTION SUNSHINE.** Constance Larrabee.

**THE N.T.C. SWEEPSTAKES**

Judge: DR. JOSEPHINE DEUBLER

**Drop ear puppies 6-12 mo. (3 entries):**

- 1st—**BETHWAY'S RINGO;** 2nd—**BETHWAY'S LITTLE GIRL;** 3rd—**BETHWAY'S DIXY**—all owned by Mrs. Donald Fournier.

**Prick ear puppies 6-12 mo. (4 entries):**

- 1st—**KING'S PREVENTION UPLAND WHIM**—Mrs. Larrabee; 2nd—**LUCY LOCKET OF GRANGE**—Mrs. Sidney Glass; 3rd—**RIVER BEND TRILBY**—F. B. and A. C. Underwood; 4th—**CHIDLEY LEAPING LENA**—Mrs. C. S. Read.

**Drop ear juniors 12-18 mo. (3 entries):**

- 1st—**BETHWAY'S PENNY KENNY**—Mrs. D. Fournier; 2nd—**MT. PAUL NANSAN**—Mrs. J. Winston; 3rd—**WENDOVER HALF POUND**—Mrs. S. Mallory.

**Prick ear juniors 12-18 mo. (3 entries):**

- 1st—**KING'S PREVENTION FUN FAGAN**—Mrs. S. Larrabee; 2nd—**KING'S PREVENTION GAY VIXEN**—Mrs. D. Cahill; 3rd—**BLACK ROCK FLORA**—Mrs. P. Williams.

**THE JUDGE'S COMMENTS**

—The 1969 N.T.C. Specialty Show, Greenwich—

As judge of the 1969 Norwich Specialty Show at Greenwich, Connecticut, on June 7—the following comments are based on my notes written while judging and my reflections after the show. Of the twenty terrier breeds the Norwich stands out in the

group as small, active, gay; but I believe many were subdued in spirit due to the late hour (3:15 p.m.), the hot day and the very rough ground which directly accounted for the poor moving. So many could not cope with the high clumps of grass—actually they hopped and stumbled. Others placed because they managed to cover the ground with truer movement—however some of these won their class because of coat. Some were in full coat with no texture and others were stripped. I am grateful and the Club must be also for those who showed their dogs—putting wins secondary. Just a word about trimming—It is apparent that dogs are being over trimmed—especially cutting and shaping. This condition is showing up in the Norwich—losing the natural look and sometimes its characteristic mane.

I was pleased to find most of the faults you find in going over a dog were in the minority. The difference in placements was in the three major departments—MOVING—COAT—ANIMATION. In these three my winners were best. Type varied from low stationed to high stationed—the Best of Breed—KING'S PREVENTION SUNSHINE, breeder-owner Constance Larrabee, was an ideal type—winning in all departments—coat—moving—animation. It was refined and quality all over. Its sparkling personality will win many admirers for the Norwich. The winners dog—Best of Opposite Sex, RIVER BEND SIMON, breeder-owner Miss Sylvia Warren, was outstanding in condition with harsh coat—firm in flesh—travel was true and determined—so active and happy to be in the ring.

As your judge—it was an honor and pleasure to pass judgement on so many fine Norwich. Thanks are in order to Mrs. Hanning the club's chairman for the presentation of the club seal on a silver key ring. This I prize and carry with me for all to see.—Terence P. Bresnahan.

## THE MATCH

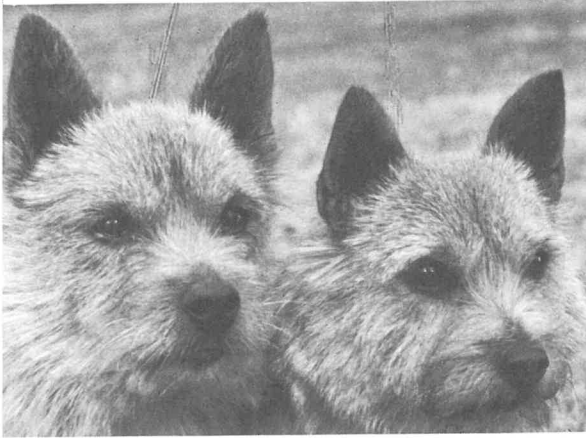
Every place in the U.S.A. has a day that can be termed "champagne" and such was ours for the Match. It dawned, as so often in New England in September, with a low ground fog that burned off into a beautiful made-to-order sort of day.

The arrivals at Nod Hill were greeted by the charming Mr. Hewes directing us to well organized parking areas. A sparkling green and white tent, large and roomy, complete with rubber matting to assure good footing, a generous amount of chairs, all was done to make members and their guests comfortable.

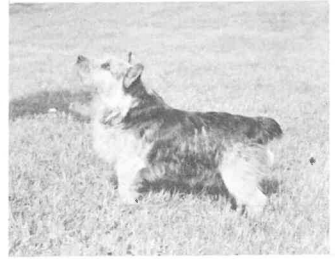
The grooming demonstration was conducted by Miss Monica Dork of Bethway. She gave an excellent talk and there was so much interest shown we should have our next demonstration with a platform so more can see how it is done. Miss Dork was completely surrounded with interested spectators. It is good to see so many new breeders and owners watching the proper technique of putting down a Norwich. Even the members who have been breeding for a number of years can learn from these exhibitions. We are indebted to Miss Dork for giving her time to help so many people.

The obedience demonstration by Mrs. Richard Stokes of Chestnut Hill, Mass. was a joy to watch. "Ginger Peaches" and Mrs. Stokes make one of the most harmonious pairs of obedience workers ever seen. They apparently share a great admiration for one another, the gaiety of the happy working little CDX Norwich and her attractive owner are a pleasure to see. The field of obedience with Norwich has much to offer and we hope to see Ginger Peaches with her U.D. (Utility Dog) degree soon. Thank you, Mrs. Stokes, for a fine performance.

After the puppies were judged the cocktails were served on the terrace of Nod Hill overlooking the valley with its first color of autumn. Once again, a time to chat and visit with old friends and new. A marvelous luncheon was served under the tent and the judging resumed with the adults.



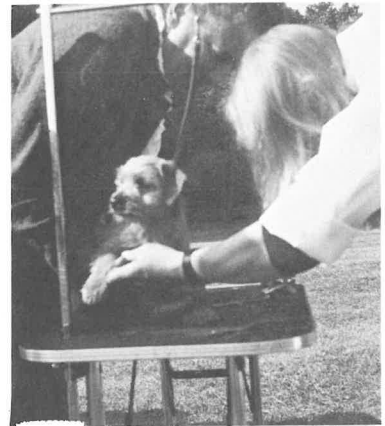
ENG. AM. CH. RAGUS RAIN MAKER and his daughter KING'S PREVENTION SUNSHINE. The Best Brace in '69 Specialty, Sunshine was also Best of Breed and Rain Maker, top Stud for '68, won the Stud Dog class.



QUARTZHILL COLLEGE CORIN  
1st Stud Dog Class  
Match Show '69



Miss Sylvia Warren and Mrs. Philip Hewes admire "GINGER" held by Mrs. Richard Stokes who gave the obedience demonstration.



Monika Doerk—who gave grooming demonstration at show tidies up Mrs. Russell Jones' BELL JAR. Her litter sister GINGER JAR won best drop ear puppy in the 3-6 months class.



Mrs. Curtis Read's  
CHIDLEY TIGER LILY  
Match Show Winner  
Avon, Conn.

Space does not permit appraisal of each Norwich but certainly the quality cannot be denied. There were some exceptional puppies and it would appear that this year's crop will make themselves known. No one can ever say that our wonderful Norwich will go any place but *up*. The breed is apparently in good hands and every year we see improvement.

We wish to thank Mr. Braithwaite for a job well done, he was one of the most gracious of judges, and possibly a bit overwhelmed at the entry. He praised the exhibitors for their great sportsmanship and enjoyed his visit with us.

To Mr. Frank Parker a special vote of thanks for stewarding and helping to organize the Match. Some of his excellent suggestions will be carried on to other Matches. It was good to see two old friends working together. Mr. Braithwaite and Mr. Parker had not seen each other for seventeen years so it was also a reunion.

Thank you, one and all, for coming to the Match. There is something rather special about the Norwich people and forgive me if I sound smug, I think we're "sorta special" don't you?

And thank you, Mr. and Mrs. Hewes, Mrs. Ferguson and Mrs. Fournier for giving us a lovely day, from start to finish.—Wit Hanning (Bench Show Chairman)

#### **Drop Ear Puppies—3-6 months—6 entries**

1—Ginger Jar	6/1/69	Mrs. Alice P. Jones Sire: Bethway's Tom Thumb dam: Candy Jar
2—Bell Jar	6/1/69	Mrs. Alice P. Jones sire: Bethway's Tom Thumb dam: Candy Jar
3—Bethway's Little Robin	4/27/69	Mrs. Donald Fournier sire: Ch. Bethway's Tony dam; Bethway's Robin
4—Bethway's Little Tony	4/27/69	Mrs. Donald Fournier sire: Ch. Bethway's Tony dam: Bethway's Robin

#### **Drop Ear Puppies—6-9 months—5 entries**

1—Bethway's Miss. Chops	3/3/69	Mrs. Donald Fournier sire: Ch. Bethway's Mr. Cricket dam: Bethways Robin
2—Ickworth Moonlight	2/1/69	Mrs. Stanford Mallory sire: Eng.Ch. Ickworth Ready dam: Ickworth Blue Marking Katriona
3—Seehouse Bran Muffin	3/9/69	Mr. and Mrs. John Dombroski sire: Tarheel's High Trump dam: Ch. Wendover Favor
4—Bethway's Noisy	2/17/69	Mrs. Donald Fournier sire: Ch. Bethway's John dam: Ch. Bethway's Quimp

#### **Drop Ear Puppies—9-12 months—2 entries**

1—Bethway's Salley Girl	12/27/68	Mrs. Donald Fournier sire: Ch. Bethway's Aramis dam: Bethway's Sailey
2—Bethway's Trampet	12/21/68	Mrs. Donald Fournier sire: Ch. Bethway's Aramis dam: Bethway's Miss. Trinket

**P.E. Puppies—3-6 months—5 entries**

- |                                  |         |   |
|----------------------------------|---------|---|
| 1—Grange Currant Bun             | 4/18/69 | Mrs. Sydney Glass<br>sire: Ch. Shawnee's Gingerbread Man<br>dam: High Tor's Grange Gambit   |
| 2—Chidley Storm Warning          |         | Mrs. Nancy Lee Wendland<br>sire: Quartzhill College Corin<br>dam: Chidley Red Pennant       |
| 3—King's Prevention Pup          | 6/16/69 | Mrs. Sterling Larrabee<br>sire: Eng. and Am.Ch.Ragus Rain Maker<br>dam: Chidley Small Craft |
| 4—King's Prevention Tinker Belle | 6/16/69 | Mrs. Frederick Krimedahl II<br>sire: Ch.Ragus Rain Maker<br>dam: Chidley Small Craft        |

**P.E. Puppies—6-9 months—10 entries**

- |                              |         |  |
|------------------------------|---------|--|
| 1—Chidley Tiger Lily         | 1/16/69 | Mrs. Curtis S. Read<br>sire: Quartzhill College Corin<br>dam: Quartzhill Musk Orchid   |
| 2—Shawnee's Triscuit         |         | Mrs. S. Powell Griffiths<br>sire: Ch. Shawnee's Cricket<br>dam: Ch. Nod Hill's Biscuit |
| 3—Chidley Black Eyed Susan   | 1/16/69 | Mrs. Curtis S. Read<br>sire: Quartzhill College Corin<br>dam: Quartzhill Musk Orchid   |
| 4—Shawnee's Sunshine Biscuit | 3/8/69  | Mrs. W. P. Wear<br>sire: Ch. Shawnee's Cricket<br>dam: Ch.Nod Hill's Biscuit           |

**P.E. Puppies—9-12 months—3 entries**

- |                     |          |  |
|---------------------|----------|--|
| 1—Grange Springdale |          | Mrs. Sydney Glass<br>sire: Ch.Shawnee's Ginger Bread Man<br>dam: Grange Twiggy     |
| 2—Chigger Bluff     | 12/11/68 | Mrs. James Baldwin<br>sire: Quartzhill College Corin<br>dam: Diamond Dilly         |
| 3—River Bend Trilby |          | Mr. and Mrs. F. B. Underwood<br>sire: River Bend Simon<br>dam: Quartzhill Trillium |

**D.E. Adult Bitches—3 entries**

- |                        |         |  |
|------------------------|---------|--|
| 1—Castle Point Tantrum |         | Mrs. William McIlvaine, Jr.  |
| 2—Castle Point Antic   | 3/3/69  | Mrs. Lorna Mackay Livingston<br>sire: Ch.Bethway's Mr. Cricket<br>dam: Castle Point Twig |
| 3—Pensum's Folly       | 9/16/66 | Mrs. Marion Ferguson<br>sire: Ch.Bethway's Pensum<br>dam: River Bend Daisy               |

**D.E. Adult Dogs—1 entry**

- |                   |        |  |
|-------------------|--------|--|
| 1—Nanfan Terrapin | 7/3/67 | Mrs. John L. Winston<br>sire: Ch.Nanfan Heckle<br>dam: Foxhunter's Tallyho |
|-------------------|--------|--|

**P.E. Adult Bitches—18 entries**

- |                                 |   |
|---------------------------------|---|
| 1—King's Prevention Twiggy Bear | Miss. Nancy Wendland<br>sire: King's Prevention Frodo<br>dam: King's Prevention Gay Ragus |
| 2—Grange Pinafore               | Mrs. Sydney Glass<br>sire: Quartzhill Bartonian<br>dam: High Tor's Grange Gambit          |
| 3—Whinlatter Cornflower         | Mrs. Elizabeth Reynolds<br>sire: Whinlatter Herald<br>dam: Whinlatter Carrie              |
| 4—Quartzhill Bargrange          | Mrs. Dean Bedford<br>sire: Quartzhill Box<br>dam: Bargrange Solitude                      |

**P.E. Adult Dogs—10 entries**

- |                              |   |
|------------------------------|---|
| 1—Bill Sykes                 | Mrs. Dean Bedford<br>sire: Ch. Ragus Rain Maker<br>dam: Dolly Vardon                      |
| 2—Pemberton Henry            | Mrs. Dean Bedford<br>sire: Bill Sykes<br>dam: Eliza Doolittle                             |
| 3—Patricia's G. I. Buddy     | Mrs. Robert Brumby<br>sire: Ch. Pemberton Timmie<br>dam: Winouspoint Sunny                |
| 4—King's Prevention Triscuit | Mrs. William C. Cook<br>sire: King's Prevention Frodo<br>dam: King's Prevention Gay Ragus |

**GENERATION CLASS**

won by

Eng. and Am. Ch. Ragus Rain Maker, Bill Sykes, Pemberton Henry

**P.E. Stud Dog Class**

won by

Quartzhill College Corin Mrs. Curtis S. Read

**Brace Class**

3 entries

Bethway's Salley's Girl and  
Bethway's Trampet

Mrs. Donald Fournier

**Best D.E. in Match**

Nanfan Terrapin

Mrs. John L. Winston

**Best Puppy in Match**

Chidley Tiger Lily

Mrs. Curtis S. Read

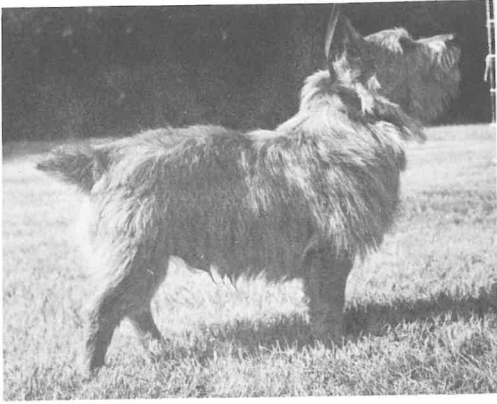
**Best in Match**

Chidley Tiger Lily

Mrs. Curtis S. Read

The members voted many thanks to Mesdames Fournier, Hanning, Hewes and Ferguson for a most lovely Match set-up at Nod Hill—the lunch, tent, ring and parking were done with great taste and for the comfort of both dogs and exhibitors, which made it a fun day for all—and fortunately the weather co-operated. Many new





RIVER BEND SIMON



Mrs. Richard Stokes with "GINGER" who performed so well in the obedience demonstration.



Mrs. William McIlvaine's drop ears who travelled all the way from Chicago for the Match Show.



Mrs. Philip Hewes' NOD HILL'S HARMONY showing in P.E. Adult Bitches at Match in Avon.

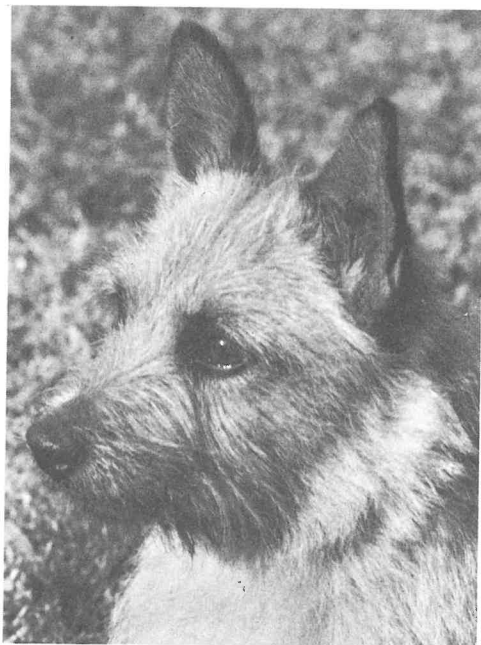


Miss Sylvia Warren—having just been presented with the John Paul Jones Trophy for Best Adult P.E.—QUARTZHILL COLLEGE CLOTHILDE.



CH. QUARTZHILL COLLEGE CLOTHILDE

RIVER BEND SIMON



KING'S PREVENTION TWIGGY BEAR

## PEDIGREES

PRICK EAR:

		Ch. Quartzhill Bartsia	Quartzhill Scammony
	Quartzhill Box	Duskie of Redcott	Quartzhill Manna
Quartzhill Barton		Ch. Whinlatter Corin	Bennie of Redcott
	Quartzhill Delrose of Goldencross	Delma of Goldencross	Midge of Redcott
QUARTZHILL COLLEGE CLOTHILDE (B)		Ch. Whinlatter Charade	Charing Cross Baccio
QUARTZHILL COLLEGE CORIN (D)		Whinlatter Candle	Ch. Whinlatter Coral
10 May 1967			Ch. Whinlatter Cob
Breeder- E.J. Smith	Ch. Interfields Half-a-Bob		Nona of Eildonbrae
Owners- S. Warren			Ch. Whinlatter Allercombe Hiker
- Mrs. C. Read			Whinlatter Cracker of Turtillus
Foxybrook Emona		Ragus Roughrider	Ch. Whinlatter Casey
	Foxybrook Esther	Foxybrook Evelyn	Whinlatter Charity
			Ragus Great Guy
			Ragus Rosanna
			Ch. Ragus Goodfellow
			Foxybrook Estelle

		Ch. Upland Spring Demon	Ch. Wychdale Napoleon
	Charing Cross Baccio	Charing Cross Chatelaine	Ch. Upland Spring Honey Dun
Whinlatter Jaunty		Ch. Whinlatter Charade	Ch. Upland Spring Little Chap
	Whinlatter Jem	Whinlatter Jemima	Dame Elaine
		Ch. Heath Tinker	Int. Ch. Whinlatter Allercombe Hiker
RIVER BEND SIMON		Jericho Lucky	Whinlatter Cracker of Turtillus
D - 28 Oct 1965	Jericho Tackle	Ch. Quartzhill Bartsia	Ch. Whinlatter Jim
Breeder-Owner: Miss Sylvia Warren		Ragus Goldilocks	Allercombe Erica
	Quartzhill Tawny Grisette		Ch. High Rising Urchin
			Ch. Quartzhill Primula
	Quartzhill Millet		Ch. Heath Tinker
			Recklaw Zora
			Quartzhill Scammony
			Quartzhill Manna
			Ch. Ragus Regal Sixpence
			Foxybrook Gene

		Hardy of King's Prevention	Kildoon Rustler
	Ch. King's Prevention Hardy Bear	Ch. Upland Spring Blue Quill	Beaver of King's Prevention
King's Prevention Frodo		Ch. Ragus Rain Maker	Eng/Am Ch. Ragus Goodfellow
	Ragus Entry Form	Ragus Everlasting	Ch. Upland Spring Connemare
KING'S PREVENTION TWIGGY BEAR (B)		Ch. Interfields Half-A-Bob	Ch. Interfields Half-a-Bob
KING'S PREVENTION TRISCUIT (D)			Ragus Rose Honey
2 July 1967			Ragus Red Pepper
Breeder - Constance Larrabee	Ch. Ragus Rain Maker		Ragus Evangelist
Owners: Nancy Welbourn			Ch. Whinlatter Charade
:Mr. & Mrs. W.C. Cook			Whinlatter Candle
King's Prevention Gay Ragus			Ch. Whinlatter Cob
	Ragus Rag Bag		Ch. Ragus Rock'n'Roll
			Ragus Great Guy
			Ragus Rose Honey
			Foxybrook Rocket
			Ragus Ruff Puff

## PEDIGREES

## DROP EAR:

Ch. Bethway's John	Ch. Bethway's Pence	Ch. Ragus Jimmy Joe	Ragus Sweet William
		Waveney Valley Pandey	
	Bethway's Mandy	Ch. Colonsay Kelly's Eye	Colonsay Fag Waggar
		Ch. Bethway's Mr. Chips	Colonsay Granny
CH. BETHWAY'S RINGO D - 15 October 1968 Breeder- Aloyise Pomeroy Owner- Mrs. Donald Fournier	Ch. Colonsay Orderley Dog	Ch. Bethway's Cricket	Ch. Bethway's Pence
			Ch. Bethway's Portia
	Colonsay's Aring	Waveney Valley My Mark	Ragus Solomon Grundy
		Colonsay Minge	Ragus Brandysnap
Colonsay's Aring	Colonsay Bluemar King	Ch. Waveney Valley Alder	Ch. Waveney Valley Gypsy
		Ch. Waveney Valley Gypsy	Ch. Colonsay Junior
	Colonsay Bluemar King	Humpty Dumpty	Gotoground True Blue
		Hanley Castle Brock	Nanfan Nectar
	Colonsay Bluemar King	Gotoground Cuckoo	Gotoground Moley
			Lesnor Gay Madam

Ch. Nanfan Heckle	Nanfan Nimble	Gotoground Moley	Gotoground Gunner
		Ch. Nanfan Nimbus	Ch. Waveney Valley Aldersister
	Nanfan Hayseed	Ch. Gotoground Widgeon Bunny	Nanfan Nettle
		Nanfan Nimrod	Ch. Gotoground Widgeon Bunny
NANFAN TERRAPIN (D) NANFAN TALLOW (B) 3 July 1967 Breeder- Mrs. Joy Taylor Owner- Mrs. John Winston	Gotoground Foxhunter	Nanfan Nettle	Nanfan Nettle
		Hunston Hedge Warbler	Ch. Waveney Valley Alder
	Gotoground Foxhunter	Ragus Solomon Grundy	Hunston Herald
		Ch. Waveney Valley Alder	Ch. Waveney Valley Alder
Foxhunters Tally-Ho	Gotoground Foxhunter	Ragus Sweet Sue	Ragus Sweet Sue
		Gotoground Tiddlywinks	Ch. Waveney Valley Alder
	Gum Drop	Ragus Merry Maid	Ragus Merry Maid
		Ch. Bethway's Pound	Ch. Ragus Jimmy Joe
	Gum Drop	Ch. Colonsay Kelly's Eye	Ch. Colonsay Kelly's Eye
		Gee Gee	Ch. Castle Point Simon
	Gum Drop		Ginger

Ch. Nanfan Heckle	Nanfan Nimble	Gotoground Moley	Gotoground Gunner
		Ch. Nanfan Nimbus	Ch. Waveney Valley Aldersister
	Nanfan Hayseed	Ch. Gotoground Widgeon Bunny	Nanfan Nettle
		Nanfan Nimrod	Ch. Gotoground Widgeon Bunny
BADGEWOOD BONNIE (B) BADGEWOOD CLYDE (D) 30 Oct 1967 Breeder-Owner: Mrs. F.S.P. Fell	Ch. Bethway's Mr. Chips	Hunston Hedge Warbler	Nanfan Nettle
		Ch. Waveney Valley Alder	Ch. Waveney Valley Alder
	Ch. Bethway's Mr. Chips	Hunston Herald	Hunston Herald
		Ragus Jimmy Joe	Ragus Jimmy Joe
Badgewood Miss Poppet	Ch. Bethway's Mr. Chips	Ch. Bethway's Pence	Ch. Colonsay Kelly's Eye
		Ch. Bethway's Portia	Ch. Brigham Young
	Ch. Newry's Mrs. McThing	Ch. Colonsay Kelly's Eye	Ch. Colonsay Kelly's Eye
		Ch. Brigham Young	Ch. Brigham Young
	Ch. Newry's Mrs. McThing	Newry's Finnegan	Newry's Finnegan
		Ragus Solomon Grundy	Ragus Solomon Grundy
	Ch. Newry's Mrs. McThing	Bethway's Chess	Ragus Brandysnap

Judge Kendrick,  
Bobbie Fournier,  
and Ch. BETHWAYS  
RINGO



NANFAN TERRAPIN



Miss Sylvia Warren's QUARTZHILL  
TRILLIUM, BOB at North Shore, K.C.



The Richard Thorndikes  
QUARTZHILL BLACK CURRANT,  
Bos North Shore K.C.

exhibitors were in evidence which is encouraging and one brave member flew on from Chicago with four dogs (I think she deserved a medal). Also it was a pleasure for many of us to meet Mr. and Mrs. Levy. Mr. Levy is the publisher of *Norwich Terrier*, U.S.A. and the *Norwich Terrier News*, and does so much for us.

### NORTH SHORE K.C. SHOW

On an extremely hot Saturday, the fourteenth of June, twelve Norwich terriers showed in Topsfield, Mass. for the thirty-fifth annual North Shore Kennel Club Show. Our president, Miss Sylvia Warren, took Best of Breed with Quartzhill Trillium—bred by Mrs. E. H. Hardy—by Quartzhill Box—Quartzhill Delrose of Goldencross.

Best of opposite sex went to Mr. & Mrs. Richard K. Thorndike III's Quartzhill Black Currant—once again, the breeder was Mrs. Hardy—by Quartzhill Box—Quartzhill Delrose of Goldencross.

Photographs attached: two

### MONTGOMERY COUNTY K.C. SHOW

The 1969 Montgomery All Terrier classic, held at the Penllyn Club, attracted a superior entry of 21 Norwich for the judge Mrs. John T. Marvin. Best of Breed was Eng. Am Ch. Ragus Rain Maker of King's Prevention. In magnificent coat and top form, it was a title he also claimed the day before at Devon. Best of Opposite Sex, Ch. Quartzhill College Clothilde, beautifully presented, showed with her usual verve for her owner Miss Sylvia Warren.

It was a good day for River Bend, Miss Warren's Quartzhill Trillium was Winner's Bitch. The eleven bitch entry included Mrs. Sydney Glass's young bitch with a future—Grange Pinafore—which won the Bred by Exhibitor class. A nice win up from the Puppy class to Best of Winners was Mrs. Powel Griffitt's handsome young fellow Shawnee's Ginger Bread Boy. River Bend Simon went Reserve Winners Dog.

It was a pleasure to show under Mrs. Marvin who took a thorough interest in each entry and had the ability to make each owner handler feel at ease in the ring. Barbara Fournier was down from Connecticut with her young drop ear star, Ch. Bethway's Ringo. Mrs. Alexander's Barbaray Bonnie Belle was Reserve Winner's bitch. Among those enjoying the day were Nancy Welbourn and her Twiggy Bear and a newcomer to the ring Mrs. Willard Griffin with Tiger Bear.

### WESTMINSTER KENNEL CLUB

1970 will mark a new era for "The Garden."

The tyranny of space has forced the organizers to adopt a new system to accommodate this numerically limited show. All dogs entered must have major points towards their championship. Only 1,500 dogs can be benched each day so terriers will be on view and judged on Monday along with all the working and non-sporting breeds. Only the group winners from the Monday judging will be invited to stay for the Tuesday Finals.

Norwich owners should like the briefer hours, expanded benching space and rings. Our breeder-judge Mrs. P. S. P. Fell owns Norwich of both ear types which won well in England where she resided for a decade before her return to Peacedale, R. I. last July.

International Kennel Club

Chicago, Ill. April 4-5, 1970

For the first time, the NTC Medal is being offered for competition at the largest

indoor dog show in the U.S.A.

The venue at the stock yards provides icing for the dog show cake. Unlimited space for benching and conformation judging, plus competitions in coursing and indoor field trials. There is sample seating and adjacent parking for all visitors in this vast and airy show hall. It is hoped Norwich will this year attract Canadian contenders to challenge the best from both coasts.



D.E.  
DROP EAR

## KENNEL AND AT STUD LISTINGS



P.E.  
PRICK EAR

### DROP EAR

**BETHWAY**—Barbara S. Fournier, Bethway Road, Bethany, Conn. 06525  
Seven choice champions at stud.

**CASTLE POINT**—Mrs. Stevens Baird, Bernardsville, N. J. 07924  
CH. NANFAN HOPPOCKET by Nanfan Nimble x Ch. Nanfan Hayseed  
CASTLE POINT TIPPLER by Ch. Mt. Paul Anderson x Castle Point Sickie

**MT. PAUL**—Mrs. John L. Winston, Mt. Paul Farm, Gladstone, N. J. 07934  
CH. WENDOVER FOXHUNTER by Gotoground Foxhunter x Wendover Apple  
NANFAN TERRAPIN by Ch. Nanfan Heckle x Foxhunter's Tallyho

**SIONNACH**—Mrs. Basil W. Stetson, Drake's Corner Road, Princeton, N. J. 08540  
CH. WENDOVER COBBLER

**THUNDERHAWK**—Mr. and Mrs. Ray Fisher, 617 Fremont, Kansas City, Mo. 64125  
THUNDERHAWK TIMBER TEBO by Nanfan Nugget x Castle Point Ecarte  
THUNDERHAWK TOPPERTUCK by Nanfan Nugget x Castle Point Ecarte

**WENDOVER**—Mrs. Stanford C. Mallory, Wendover Farm, Mendham, N. J. 07945  
WENDOVER HALF POUND by Ch. Bethways Pound x Wendover Eliza

### PRICK EAR

**BARTON**—Mr. and Mrs. John, 335 Fourth Avenue, Landsdowne, Md. 21227  
KING'S PREVENTION HAPPY BEAR by Ch. K. P. Hardy Bear x K. P. Gay Britina

**BLU-FROST**—Mr. and Mrs. James Hanning, Valley Road, Warren, Conn. 06777  
CH. WHINLATTER JOHNNIE by Ch. Whinlatter Charade x Ch. Whinlatter Janet  
BLU-FROST PETER PIPER—B&T—by Ch. Whinlatter Johnnie x Ch. High Rising  
Barmaid

**CHIDLEY**—Mrs. Curtis S. Read, 48 Berry Hill Road, Oyster Bay, N. Y. 11771  
QUARTZHILL COLLEGE CORIN—B&T—by Quartzhill Bartonina x Foxybrook Emona

**DOLOBRAN**—Mr. and Mrs. C. A. Griscom, III, Nepun Road, Watch Hill, R. I. 02891  
CH. LONGWAYS HECTOR by Longways Vulcan x Ch. Longways Noel's Eve

**DUNKIRK**—Mrs. Sheila Hurline, Route 2, Hampstead, Md. 21074  
KING'S PREVENTION UPLAND JOCK by Eng. Am. Ch. Ragus Rainmaker x Ch.  
Upland Spring Magpie

**GIMBEL**—Mr. Peter R., 8 East 75th Street, New York, N. Y. 10021

WHINLATTER CONDUCTOR P.E. by Ch. Whinlatter Comedy x Whinlatter Cloud

**GRANGE**—Mrs. Sydney W. Glass, Bohemia Church Road, Warwick, Md. 21912

Prick ear puppies, whelped 12/7/68 for sale. Phone (301) 275-2249.

**KING'S PREVENTION**—Mrs. Sterline Larrabee, Chestertown, Md. 21620. Stud service to approved bitches only.

ENG. AM. CH. RAGUS RAINMAKER by Ch. Interfields Half-A-Bob x Ragus Rose Honey

CH. KING'S PREVENTION MacMILLAN by Ch. K. P. Hardy Bear x K. P. Ginger Snap

**LONGWAYS**—Mrs. Emory G. Alexander, 237 Cheswold Hill Road, Haverford, Pa. 19041

CH. LONGWAYS QUINTIUS—\$75.00

CH. WHINLATTER ALLERCOMBE HIKER—\$100.00

LONGWAYS WALDO—\$75.00

**MOUNTAIN BROOK**—Mrs. William C. Cook, RFD 3, Brattleboro, Vt. 05031

KING'S PREVENTION TRISCUIT by K. P. Frodo x K. P. Gay Ragus

**NOD HILL**—Mr. and Mrs. Philip Hewes, 345 Waterville Road, Avon, Conn. 06001

**OAKLEY**—Mrs. A. C. Randolph, Oakley Farm, Upperville, Va. 22176

JERICHO RINGLEADER by Jericho Gay Rascal x Jericho Pickle

RORY OF OAKLEY by White Flag Blossom x Dill Pickle

**PATRICIA'S**—Miss Patricia Brumby, 232 Brookville Road, Muttontown, Glen Head, L. I., N. Y. 11545

PATRICIA'S G.I. BUDDY by Ch. Pemberton Timmy x Winouspoint Sunny

**PEMBERTON**—Mr. and Mrs. Dean Bedford, Fox Hill Farm, Fallstown, Md. 21047

**SHAWNEE**—Mrs. S. Powel Griffiths, 8709 Shawnee St., Philadelphia, Pa. 19118

CH. SHAWNEE'S CRICKET, by Ch. Longways Felix x Whinlatter Hesta

## DROP EAR AND PRICK EAR

**NEWRY**—Mrs. Joseph J. Haggerty, Remsenburg, L. I., N. Y. 11960

**RIVER BEND**—Miss Sylvia Warren, River Bend, Dover, Mass. 02030

RIVER BEND SIMON by Whinlatter Jaunty x Quartzhill Tawny Grisette

QUARTZHILL NIGHTSHADE—B&T—by Interfields Hamlet x Quartzhill Millet

## THE NORWICH TERRIER NEWS

COORDINATING EDITOR, James Fagan Scharnberg, Box 472, Valley Forge, Pa. 19481

MEMBERS' NEWS—mail to Mrs. Eliot M. Wadsworth, Hale St., Beverly, Mass. 01915

SUBSCRIBERS' NEWS—mail to Mrs. Philip Hewes, 345 Waterville Rd., Avon, Conn. 06001

DEADLINE—Spring: 1st March, Fall: 1st October. No part of the News may be reproduced without written permission from The Norwich Terrier Club.

We have permission to quote from the English Norfolk and Norwich Terrier Clubs, the A.K.C. Pure-Bred Dogs, The Field, Popular Dogs, Dog World, and Our Dogs.

THE NORWICH TERRIER NEWS—Spring and Fall, \$4.00 per year, single copies \$2.00. All checks payable to The Norwich Terrier Club. All subscriptions and requests for copies to: SUBSCRIPTION SECRETARY, Mrs. Philip Hewes, 345 Waterville Road, Avon, Conn. 06001.